

SCZ

CLARKE  
+  
COMO

# ABOVE ALL ELSE

## FEATURES

- + Coquitlam's tallest tower
- + Built by Marcon: a local and respected builder with over 32 years of experience, over 10,000 homes built and a proven track record
- + 49 storeys of one, two and three bedroom homes by award-winning GBL Architects
- + Over 20,000 sq. ft. of indoor and outdoor amenities including Lifestyle Amenities on Level 28, Sky Lounge on Level 49, Concierge, Guest Suites, Fully-equipped Fitness Facility, Sauna, Sports Court, Karaoke Room and much more!
- + 364 homes on 49 floors featuring 9 foot ceilings, air conditioning, BOSCH and Fisher Paykel appliances, large balconies and amazing views
- + Access to the Evergreen Line SkyTrain directly across the street



COQUITLAM'S TALLEST

LEVEL 49

Sky Lounge  
2,600 SQ FT

MEZZANINE

Outdoor Amenities  
7,600 SQ FT

Lifestyle Amenities  
6,650 SQ FT

LEVEL 28

3,000 SQ FT

LOBBY

# THE VIEWS



S

W

N

E

S



*Actual view from Level 49*

## LEVEL 2

Dining Area with Kitchen,  
Lounge and Bathroom

Outdoor Picnic Area

Outdoor Sports Court

Outdoor Children's  
Play Area

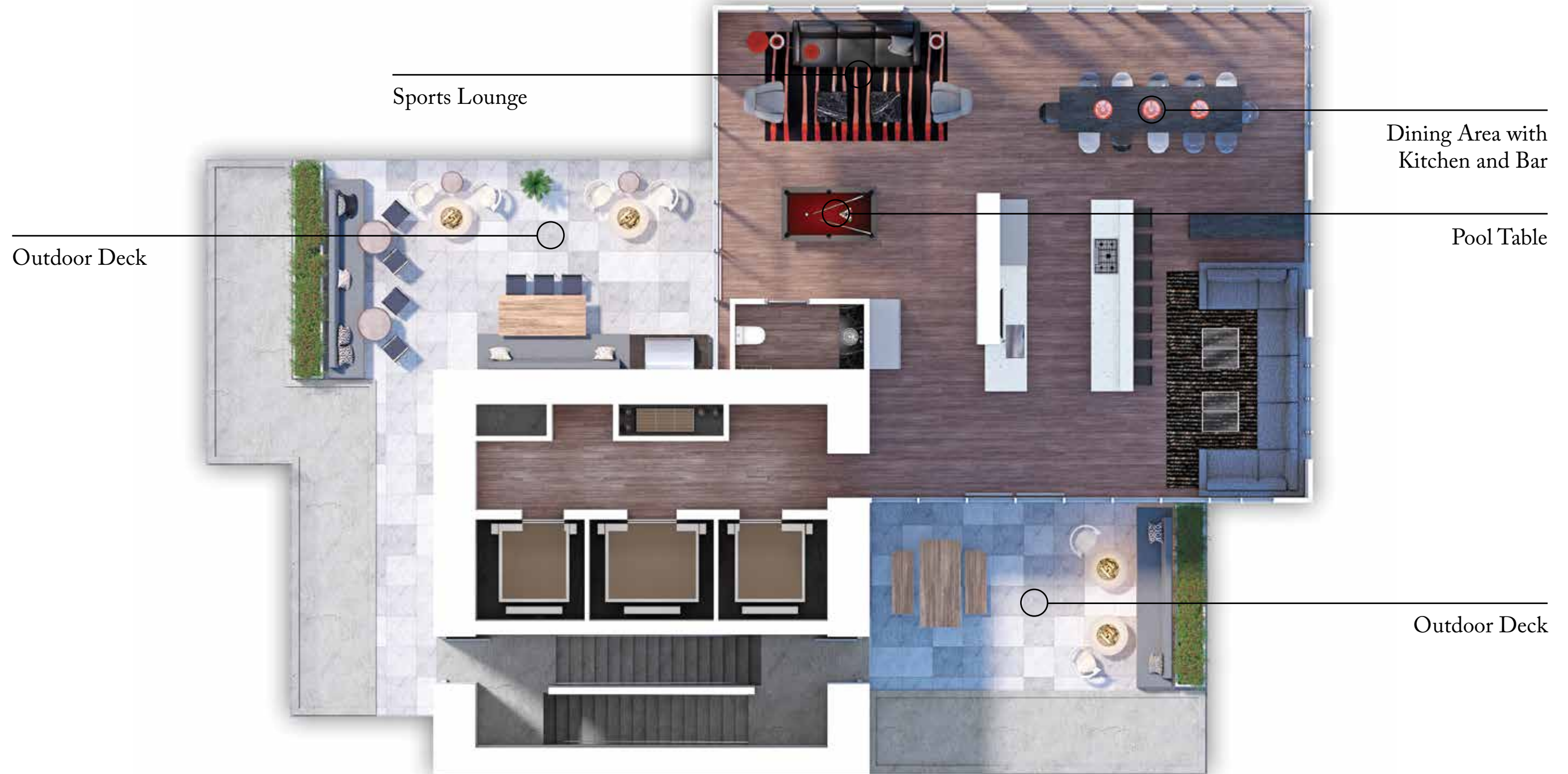
Dog Walk



# LEVEL 28



# LEVEL 49





## Amenities

### + Lobby (3,000 sq FT):

- Reception with Concierge
- Refrigerated Grocery/Storage Area for Concierge to receive deliveries
- Cyber Lounge
- Multiple Lounge Areas
- Conference Room

### + Mezzanine Outdoor Amenities

(outdoor: 7,600 sq FT, indoor: 983 sq FT):

- Dining Area with Kitchen, Lounge and Bathroom
- Access to Outdoor Area including:
  - Sports Court
  - Children's Play Area
  - Picnic Area
  - Dog Walk

### + Level 28 Lifestyle Amenities (18' ceilings)

(6,650 sq FT):

- Fully-equipped Gym
- Sauna/Change Rooms
- Table Tennis
- Music Room
- Karaoke Room
- Indoor Sports Court
- Yoga Room
- Kids Room
- 2 Guest Suites

### + Level 49 Sky Lounge (2,600 sq FT):

- Outdoor 360 Degree Viewing Deck
- Dining Area with Kitchen and Bar
- Sports Lounge
- Pool Table

# THE PLAZA



Among the more than 10,000 homes Marcon has built, there have been many notable residences, including the first high-rise in Canada to achieve LEED Certification.

Today, all Marcon homes are built to Built Green Canada standards. These standards use the latest construction technology to help future-proof your home, and support the quality and value that have become hallmarks of the Marcon name.





**UNIT A** | 1 bed  
463 SQ FT  
Level 3-12

**UNIT A** | 1 bed  
463 SQ FT  
Level 3-12

**UNIT E** | 1 bed + den  
595 SQ FT  
Level 3-27

**UNIT L** | 2 bed  
888 SQ FT  
Level 3-27

**UNIT F** | 2 bed  
771 SQ FT  
Level 3-27

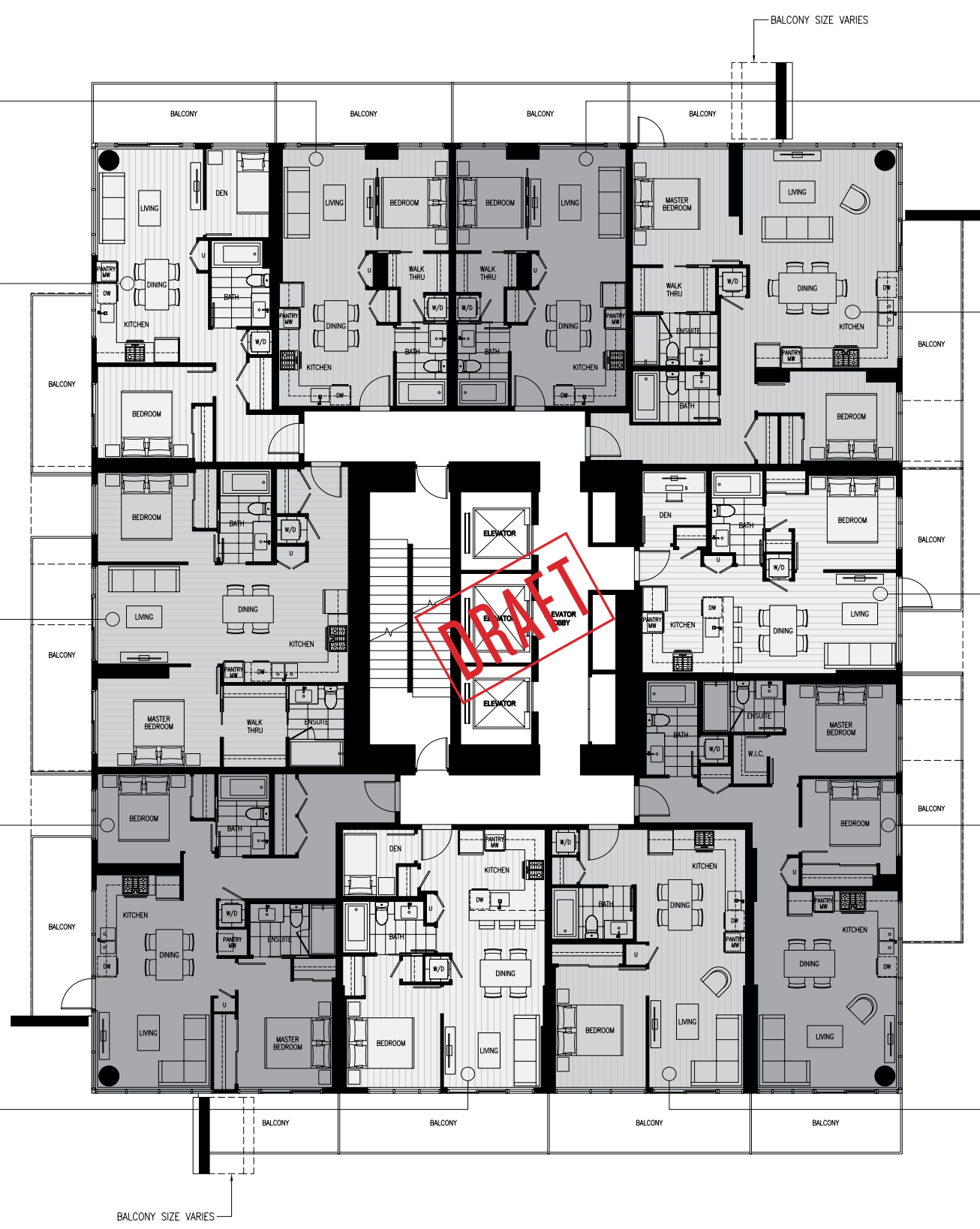
**UNIT C** | 1 bed + den  
538 SQ FT  
Level 3-27

**UNIT H** | 2 bed  
813 SQ FT  
Level 3-27

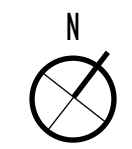
**UNIT G** | 2 bed  
781 SQ FT  
Level 3-27

**UNIT D** | 1 bed + den  
548 SQ FT  
Level 3-27

**UNIT B** | 1 bed  
530 SQ FT  
Level 3-27



**BALCONIES SHOWN: ODD FLOOR NUMBERS**  
**BALCONIES WITH DASHED LINES: EVEN FLOOR NUMBERS**



**UNIT N** | 2 bed + den  
926 SQ FT  
Level 13-43

**UNIT E** | 1 bed + den  
595 SQ FT  
Level 3-27

**UNIT F** | 2 bed  
771 SQ FT  
Level 3-27

**UNIT H** | 2 bed  
813 SQ FT  
Level 3-27

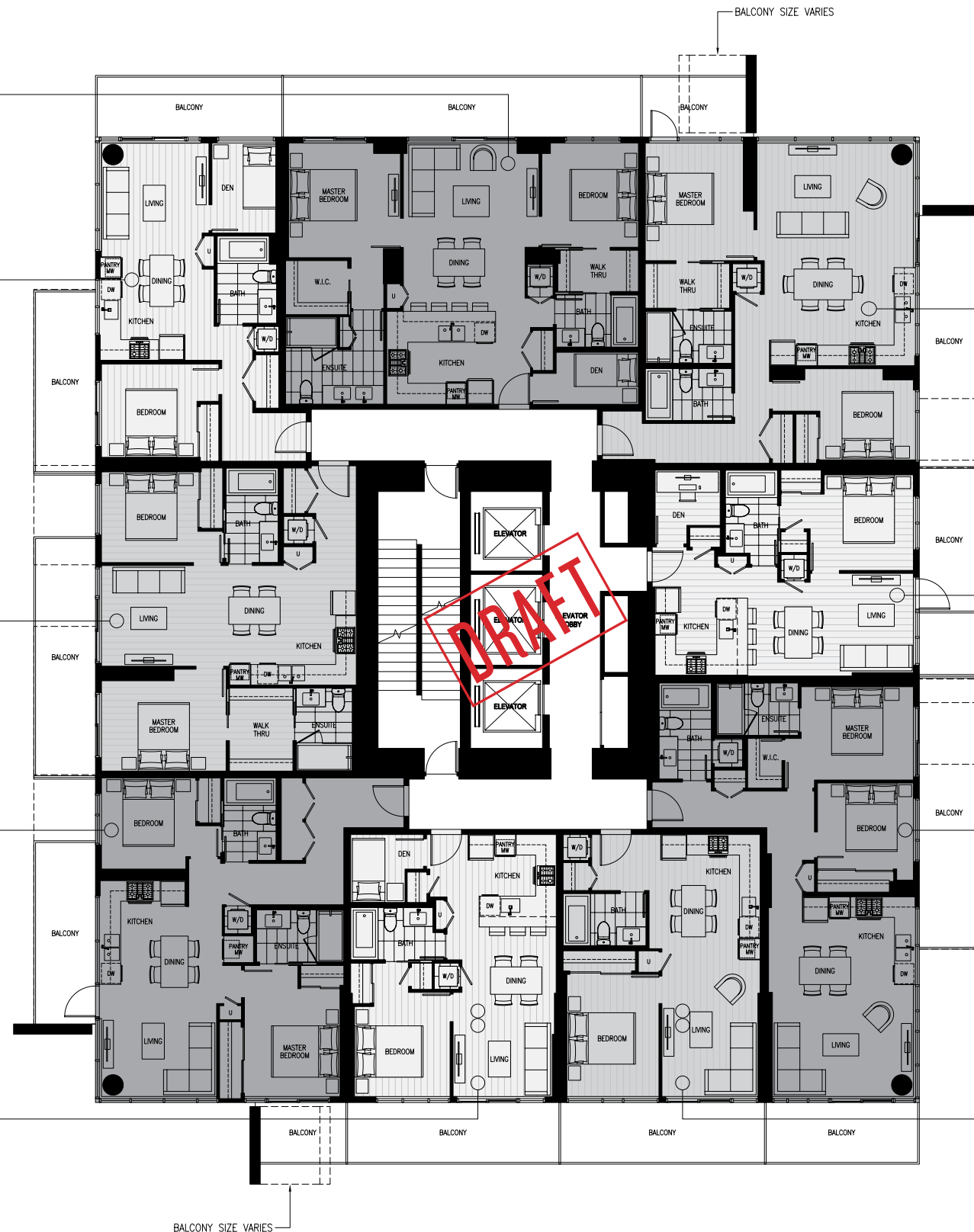
**UNIT D** | 1 bed + den  
548 SQ FT  
Level 3-27

**UNIT L** | 2 bed  
888 SQ FT  
Level 3-27

**UNIT C** | 1 bed + den  
538 SQ FT  
Level 3-27

**UNIT G** | 2 bed  
781 SQ FT  
Level 3-27

**UNIT B** | 1 bed  
530 SQ FT  
Level 3-27



**DRAFT**

**BALCONIES SHOWN:** ODD FLOOR NUMBERS  
**BALCONIES WITH DASHED LINES:** EVEN FLOOR NUMBERS



**UNIT N** | 2 bed + den  
926 SQ FT  
Level 13-43

**UNIT M** | 2 bed  
910 SQ FT  
Level 29-43

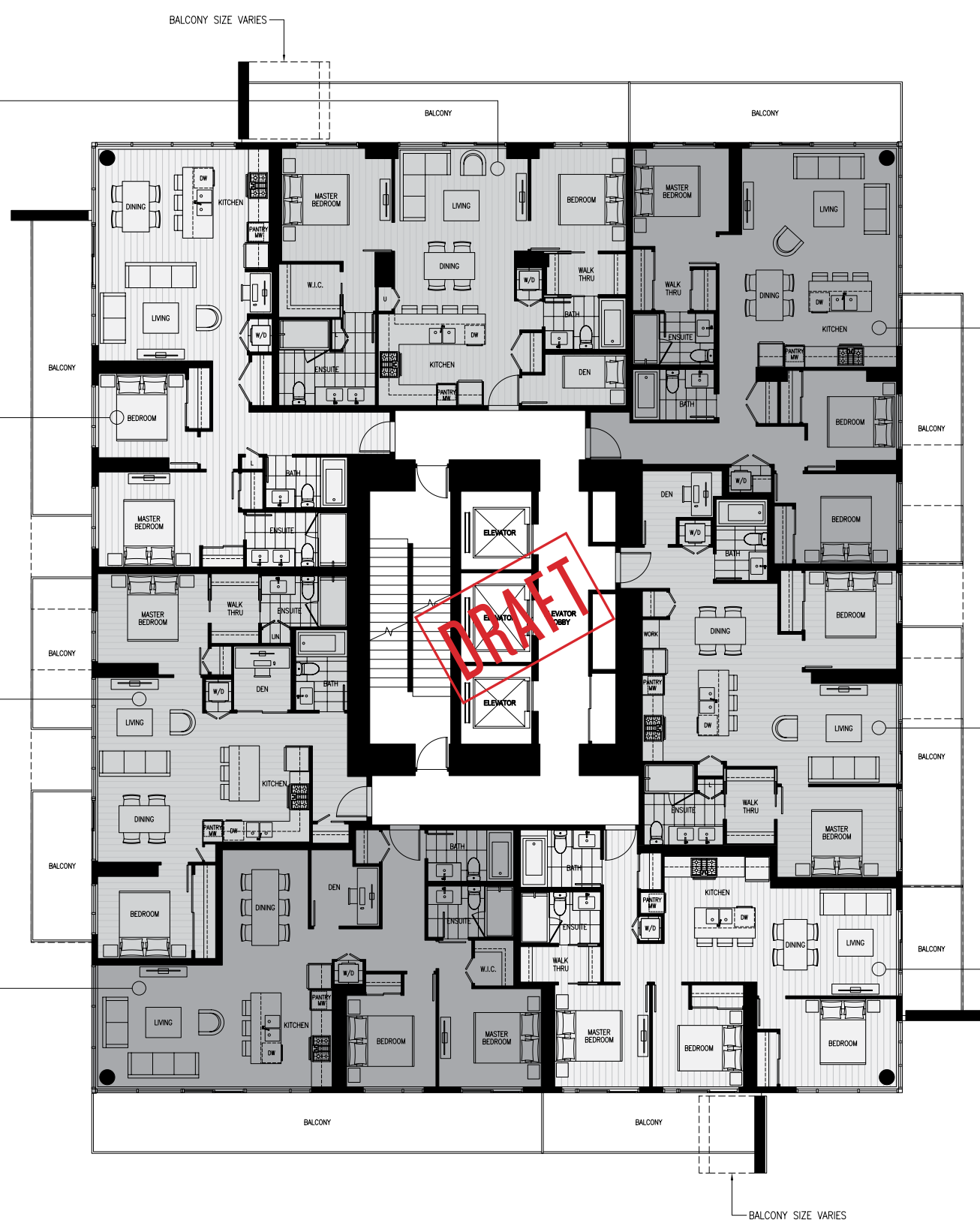
**UNIT I** | 2 bed + den  
852 SQ FT  
Level 29-43

**UNIT O** | 2 bed + den  
948 SQ FT  
Level 29-43

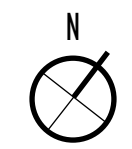
**UNIT R** | 3 bed  
1,030 SQ FT  
Level 29-43

**UNIT K** | 2 bed + den  
887 SQ FT  
Level 29-43

**UNIT J** | 3 bed  
875 SQ FT  
Level 29-43



**BALCONIES SHOWN:** ODD FLOOR NUMBERS  
**BALCONIES WITH DASHED LINES:** EVEN FLOOR NUMBERS



# TRANSIT



# THE INTERSECTION OF LIFE+STYLE IN WEST COQUITLAM

## EDUCATION + CHILDCARE

- 01 Simon Fraser University
- 02 Coquitlam College
- 03 Roy Stibbs Elementary
- 04 Mountain View Elementary
- 05 Miller Park Community School
- 06 Banting Middle School
- 07 Porter Street Elementary School
- 08 Port Moody Secondary School
- 09 Burnaby Mountain Secondary
- 10 YMCA Little Scholars Day Care
- 11 YMCA Tri-Cities Child Care Resources & Referral

## SHOPPING + SERVICES

- 12 H Mart
- 13 Burquitlam Plaza / Safeway / Liquor store
- 14 Northgate Village
- 15 Lougheed Town Centre

## RESTAURANTS + CAFES

- 16 Connected Minds Café & Roastery
- 17 C-Lovers Fish & Chips
- 18 Joey's Coquitlam
- 19 White Spot
- 20 KFC
- 21 Church's Chicken
- 22 The Wild Fig Restaurant + Lounge
- 23 Sushi California
- 24 Mount Athos Pizza
- 25 Hanano Sushi & Grill
- 26 Pizza Factory
- 27 Wonjo BBQ Restaurant

## PARKS + RECREATION

- 28 Vancouver Golf Club
- 29 Como Lake Park
- 30 Rocky Point Park – Port Moody
- 31 Poirier Sport and Leisure Complex
- 32 Burnaby Mountain Conservation Area
- 33 Centennial Rose Garden
- 34 Blue Mountain Park
- 35 Burns Park
- 36 Mackin Park
- 37 Cottonwood Park
- 38 Burquitlam Park / Future YMCA
- 39 Burnaby Lake Regional Park
- 40 Stoney Creek Trail System



# THE NEIGHBOURHOOD

## Interior Design Details

### INTERIORS

- + High efficiency heating and air conditioning system for year round comfort
- + Built in USB charging connection in kitchen area and bedrooms
- + Bright, contemporary interiors by highly-regarded Trepp Design Inc.
- + Two contemporary colour palettes to choose from, light and dark
- + Blomberg stacked front-loading washer and dryer
- + Smart glass LowE2 panoramic windows with sleek roller blinds on all exterior windows
- + Spacious master bedrooms for ultimate relaxation (king beds in most)
- + Laminate hardwood flooring throughout kitchen, den, living, dining and bedrooms, in "Attic Oak" or "Horizon Oak"

### KITCHENS

- + Premium stainless steel appliance package:
  - Fisher&Paykel bottom-mount refrigerator
  - Bosch 24" built-in dishwasher
  - Bosch 24" gas cooktop (1 bed, 1 bed+den plans), Bosch 30" gas cooktop (2 bed, 2 bed+den, 3 bed plans)
  - Bosch 24" wall oven with self-clean (1 bed, 1 bed+den plans), Bosch 30" wall oven (2 bed, 2 bed + den, 3 bed plans)
  - AEG Perfekt Glide range hood fan with stainless steel underside
  - Panasonic stainless steel inverter microwave oven with trim kit
  - Grohe Essence single-control pull-down faucet in chrome
- + Lacquer flat slab lower cabinets in "Grigio Efoso" or "White Super Matte" with laminate flat slab upper cabinets in "Dark Lady" or "Rift Cut Oak" complete with soft-close hardware
- + Select homes with full-height pantries for added storage
- + Solid Quartz countertops and backsplash in "Statuario" or "Calacatta"
- + Kruger stainless steel under-mount sink
- + In-sink waste disposal system
- + Recessed pot lighting accompanied with under-cabinet puck lighting
- + Lemans II System corner storage unit for added convenience (select homes)
- + Recycling bin located beneath sink

# FEATURES + FINISHES

## ENSUITES

- + Laminate flat slab cabinets in either “Dark Lady” or “Rift-Cut Oak” complete with soft-close hardware
- + Solid stone countertops and backsplash in “Arctic White”
- + Grohe Essence single control faucet in chrome and Grohe Euphoria hand shower and rain head shower in chrome
- + Deep soaker tub with tiled front and surround in "White"
- + Porcelain floor tile in “Silver” or “Daino Reale” with decorative porcelain mosaic tile accent wall
- + Acritec under-mount sink
- + Frameless glass shower enclosure and tile surrounds in "White"
- + Mirror with wood veneer accent shelving, medicine cabinet and light bar
- + Caroma Somerton Smart dual flush toilet
- + Taymor Astral bathroom accessories

## MAIN BATH

- + Laminate flat slab cabinets in either “Dark Lady” or “Rift-Cut Oak” complete with soft-close hardware
- + Solid stone countertop in “Arctic White”
- + Grohe Essence single control faucet in chrome and Grohe Concetto shower head and spout
- + Deep soaker tub with tile front and surround in "White"
- + Porcelain floor tile in “Silver” or “Daino Reale”
- + Caroma Somerton Smart dual flush toilet
- + Taymor Astral bathroom accessories

## GREEN INITIATIVES

- + Improved indoor air quality thanks to low VOC paints and flooring throughout
- + Water conservation: low-flow toilets, showerheads, faucet aerators, and drought-tolerant landscaping

- + Smart Location: pedestrian-friendly community with easy access to transit; efficient site-planning for compact housing; and a diverse range of housing/ floor plan types
- + Energy conservation: high-efficiency domestic hot water, heating & cooling system; energy-efficient common area lighting; Energy Star® windows, refrigerator, dishwasher and clothes washer
- + Emissions reduction: pre-wired power to select parking stalls in underground parkade for electric vehicle charging
- + Recycling program: recycling facilities for residents; recycled materials used in construction; demolition material and up to 75% of construction waste recycled
- + Extra-green efforts: native plantings to reduce the need for pesticides and fertilizers; erosion control and vegetation safeguards; soil control and bulk excavating to reduce site disturbance; and environmental workshops with trades and suppliers

604.937.5670

567LIVING.COM

MARCON

RENNIE  
MARKETING  
SYSTEMS