



**CANVAS**

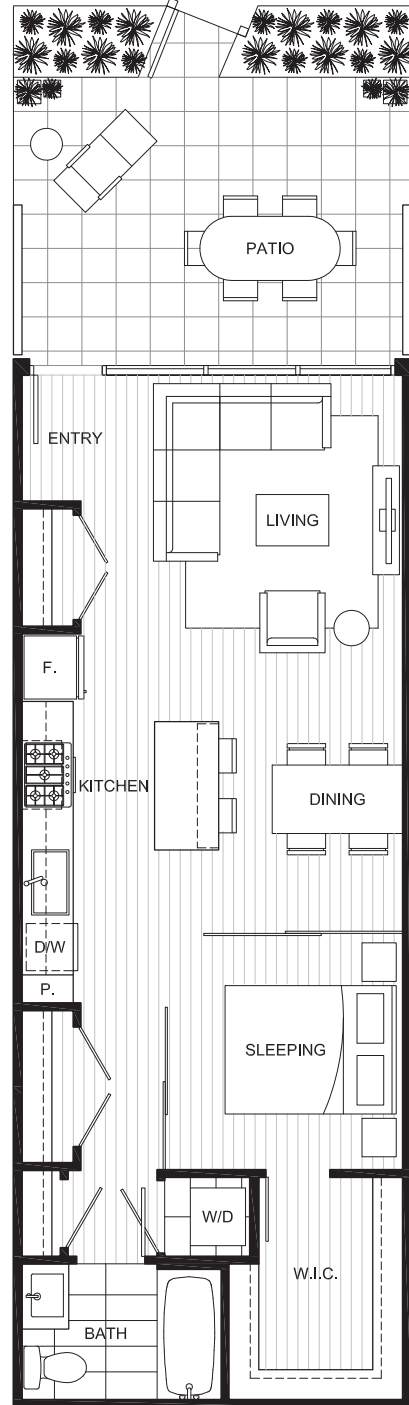
# PLAN B2

## OPEN CONCEPT 1 BEDROOM

LIVING: 630-635 SQ FT (APPROX)

OUTDOOR: 110-165 SQ FT (APPROX)

UNITS: 103, 104, 105, 106, 107, 108, 109



### BUILDING 2



Dimensions, square footage, floor plates and floor plans are approximate only. The developer reserves the right without notice to make modifications to dimensions, square footage, floor plans, floor plates, landscaping design, project design, materials and specifications to maintain the high standard of this development. The Developer may also make such further modifications as are permitted by the disclosure statement and the contract of purchase and sale between the purchaser and developer. E.&O.E





**CANVAS**

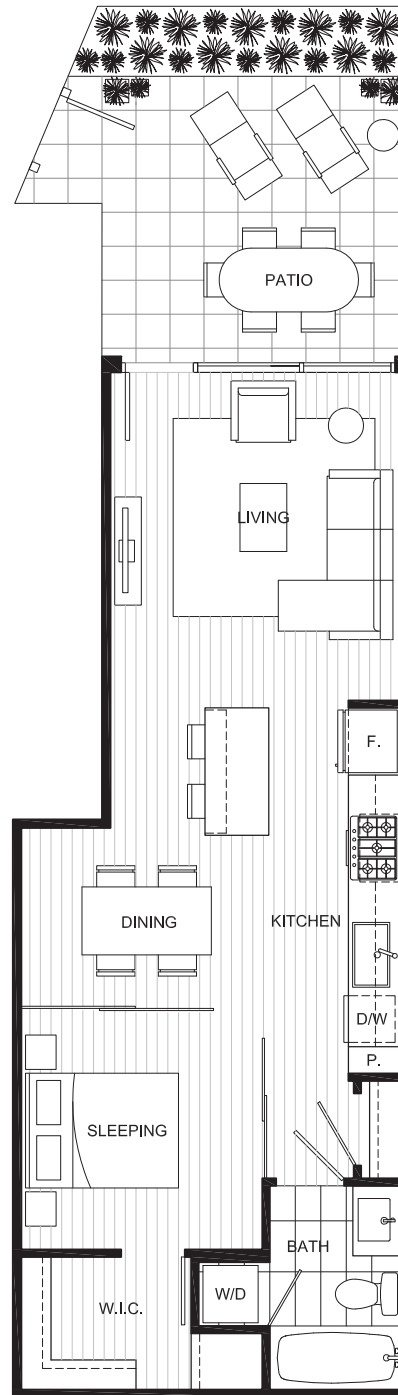
# PLAN B6

## OPEN CONCEPT 1 BEDROOM

LIVING: 580 SQ FT (APPROX)

OUTDOOR: 165 SQ FT (APPROX)

UNITS: 102



## BUILDING 2



Dimensions, square footage, floor plates and floor plans are approximate only. The developer reserves the right without notice to make modifications to dimensions, square footage, floor plans, floor plates, landscaping design, project design, materials and specifications to maintain the high standard of this development. The Developer may also make such further modifications as are permitted by the disclosure statement and the contract of purchase and sale between the purchaser and developer. E.&O.E





**CANVAS**

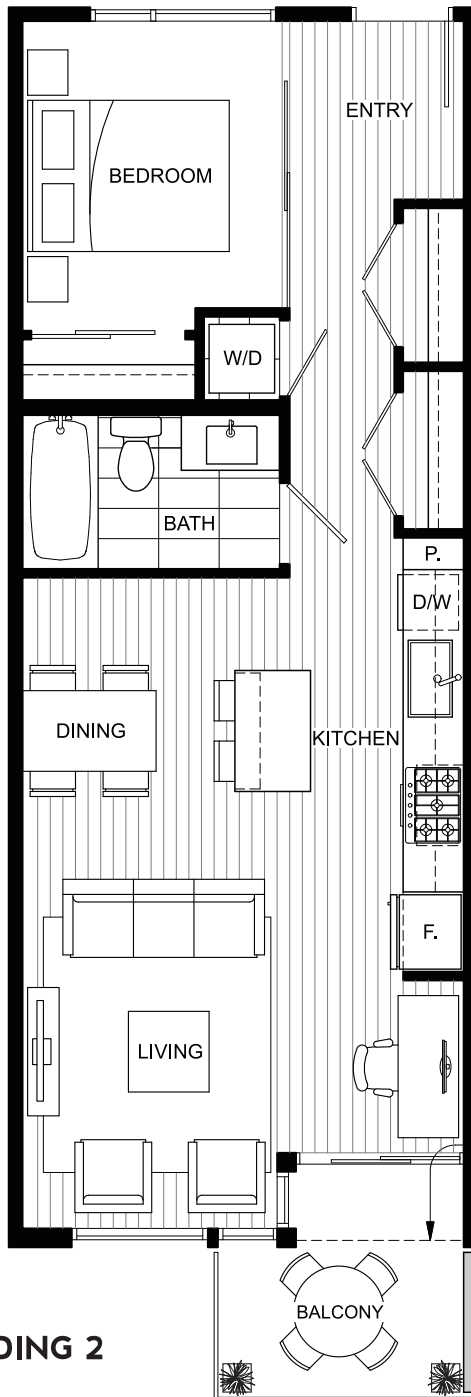
# PLAN C

## 1 BEDROOM

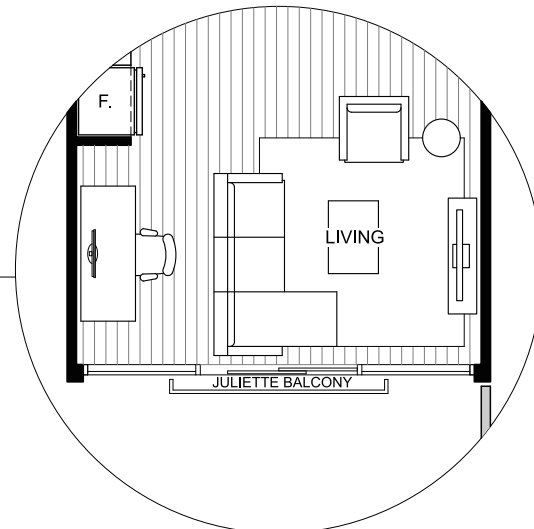
610-630 SQ FT (APPROX)

UNITS: 303-503, 304-504, 305-505

306-506, 308-508, 310-510, 311-511



LIVING & WINDOW FOR  
UNITS #308, #408 & #508



**BUILDING 2**



Dimensions, square footage, floor plates and floor plans are approximate only. The developer reserves the right without notice to make modifications to dimensions, square footage, floor plans, floor plates, landscaping design, project design, materials and specifications to maintain the high standard of this development. The Developer may also make such further modifications as are permitted by the disclosure statement and the contract of purchase and sale between the purchaser and developer. E.&O.E





CANVAS

# PLAN C1

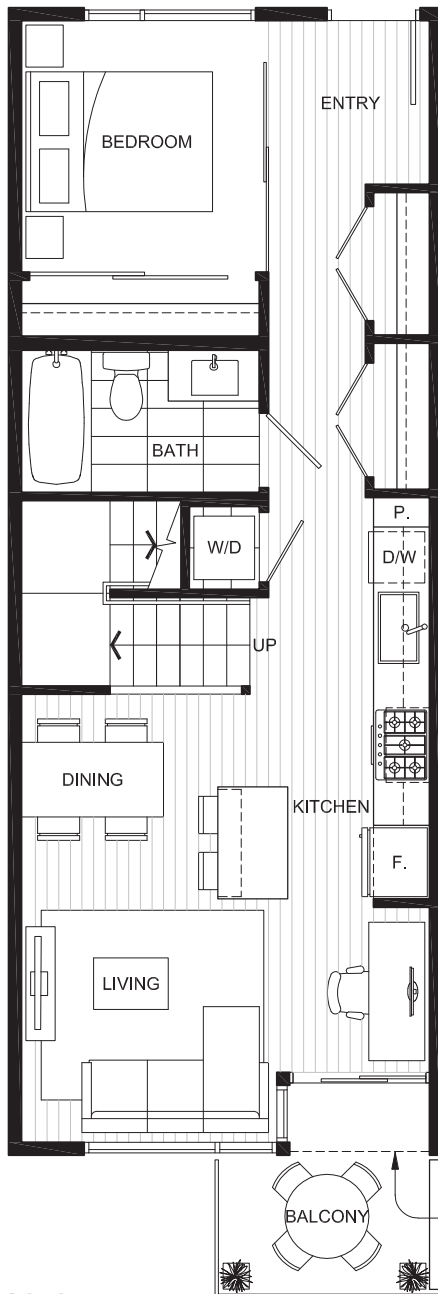
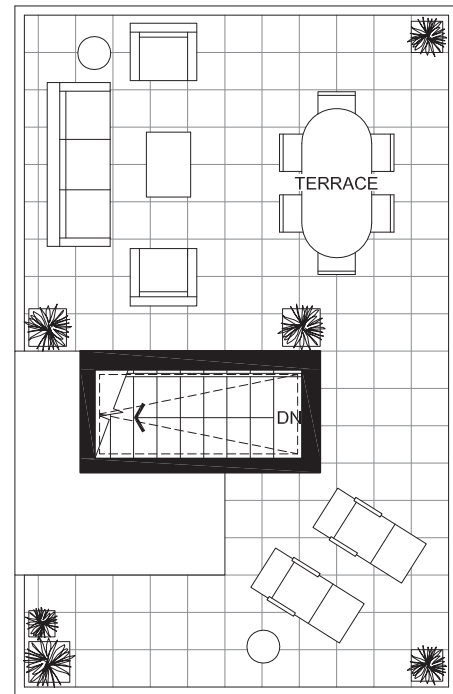
## 1 BEDROOM

LIVING: 620-630 SQ FT (APPROX)

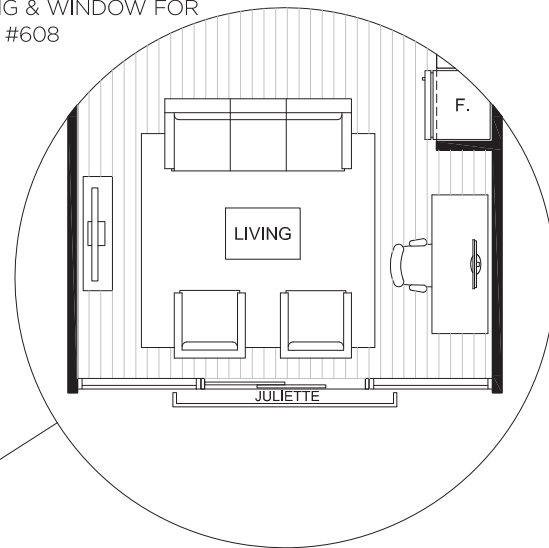
OUTDOOR: 380-470 SQ FT (APPROX)

UNITS: 603, 604, 605, 606,  
608, 610, 611

ROOF DECK



LIVING & WINDOW FOR UNIT #608



## BUILDING 2



Dimensions, square footage, floor plates and floor plans are approximate only. The developer reserves the right without notice to make modifications to dimensions, square footage, floor plans, floor plates, landscaping design, project design, materials and specifications to maintain the high standard of this development. The Developer may also make such further modifications as are permitted by the disclosure statement and the contract of purchase and sale between the purchaser and developer. E.&O.E





**CANVAS**

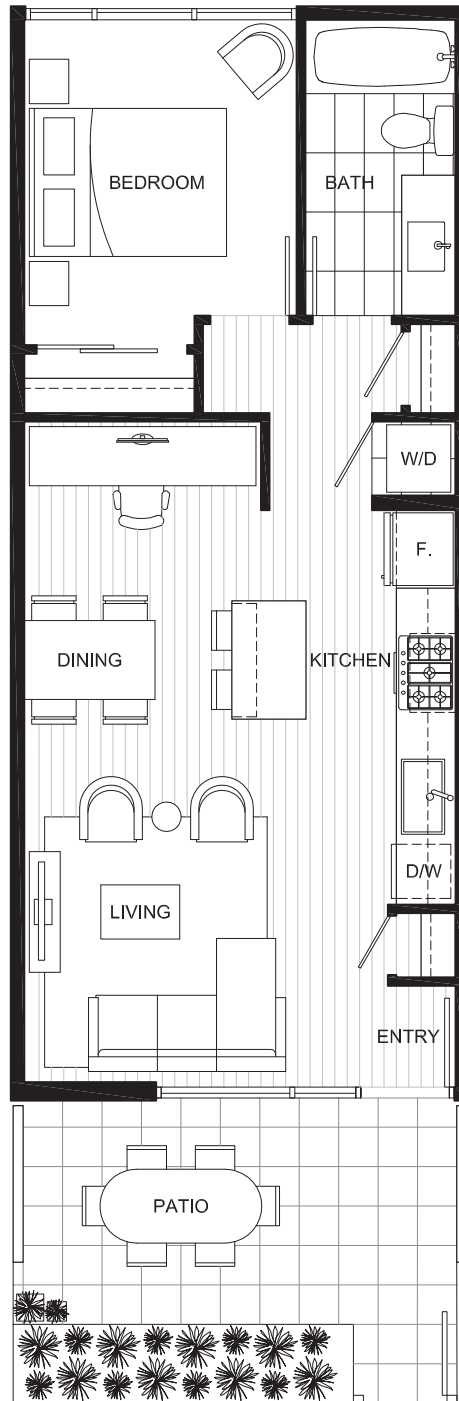
# PLAN C2

## 1 BEDROOM

LIVING: 560-565 SQ FT (APPROX)

OUTDOOR: 100-105 SQ FT (APPROX)

UNITS: 407, 409, 411, 413, 421, 423



## BUILDING 2



Dimensions, square footage, floor plates and floor plans are approximate only. The developer reserves the right without notice to make modifications to dimensions, square footage, floor plans, floor plates, landscaping design, project design, materials and specifications to maintain the high standard of this development. The Developer may also make such further modifications as are permitted by the disclosure statement and the contract of purchase and sale between the purchaser and developer. E.&O.E





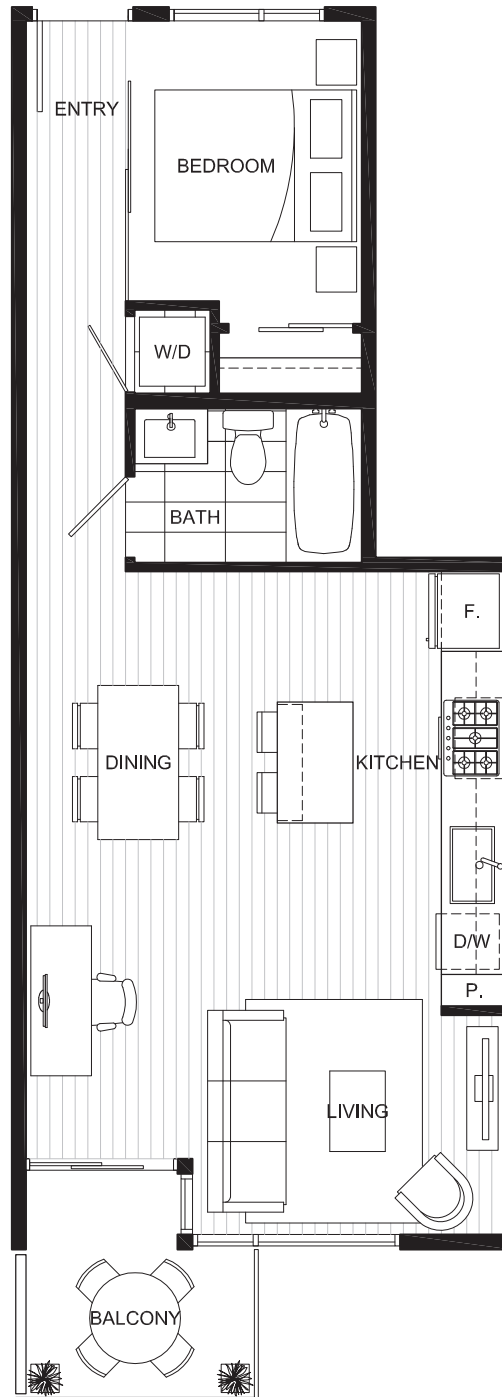
**CANVAS**

# PLAN D

## 1 BEDROOM

580-595 SQ FT (APPROX)

UNITS: 302-602, 412-612



### BUILDING 2



Dimensions, square footage, floor plates and floor plans are approximate only. The developer reserves the right without notice to make modifications to dimensions, square footage, floor plans, floor plates, landscaping design, project design, materials and specifications to maintain the high standard of this development. The Developer may also make such further modifications as are permitted by the disclosure statement and the contract of purchase and sale between the purchaser and developer. E.&O.E





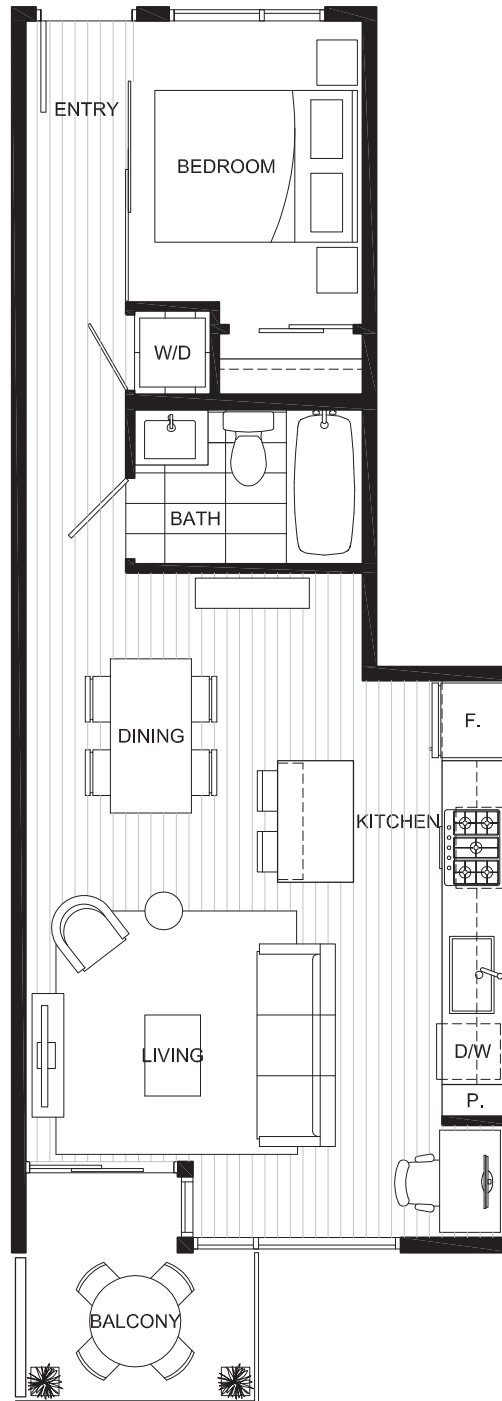
**CANVAS**

# PLAN D2

**1 BEDROOM**

570 SQ FT (APPROX)

UNITS: 312



**BUILDING 2**



Dimensions, square footage, floor plans and floor plates are approximate only. The developer reserves the right without notice to make modifications to dimensions, square footage, floor plans, floor plates, landscaping design, project design, materials and specifications to maintain the high standard of this development. The Developer may also make such further modifications as are permitted by the disclosure statement and the contract of purchase and sale between the purchaser and developer. E.&O.E





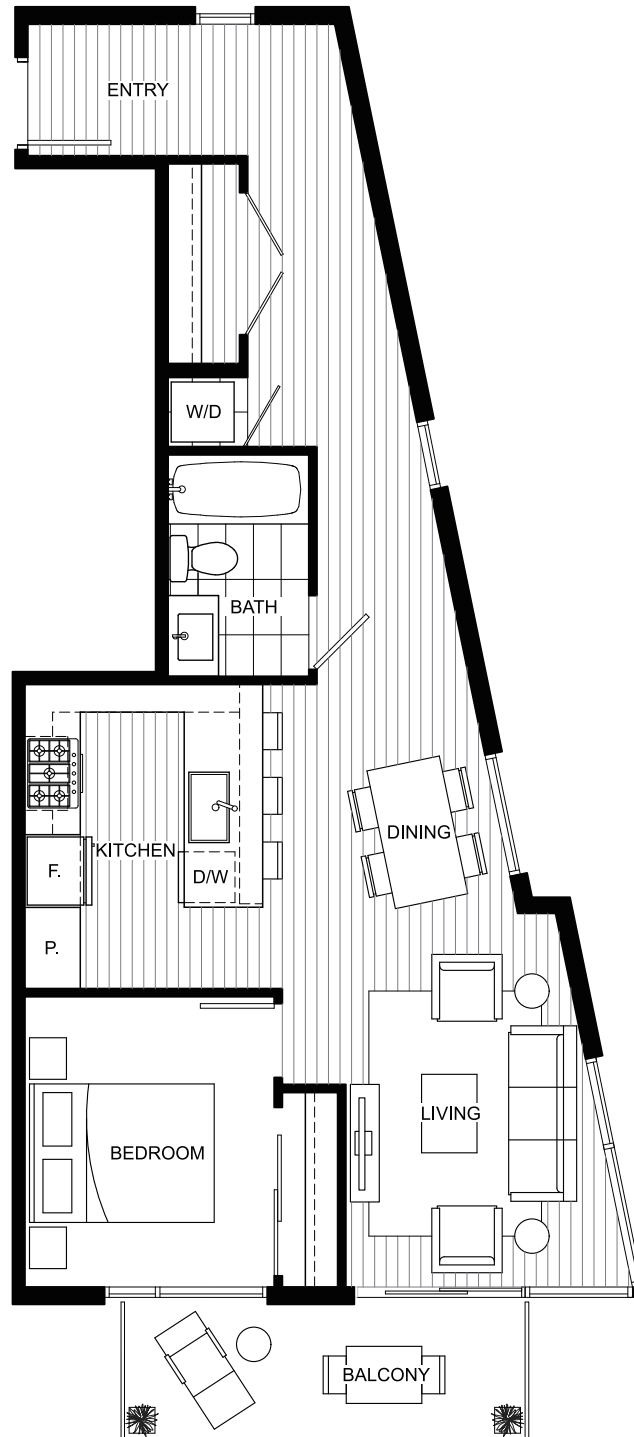
**CANVAS**

# PLAN N

## 1 BEDROOM

715-730 SQ FT (APPROX)

UNITS: 413, 513



### BUILDING 2



Dimensions, square footage, floor plates and floor plans are approximate only. The developer reserves the right without notice to make modifications to dimensions, square footage, floor plans, floor plates, landscaping design, project design, materials and specifications to maintain the high standard of this development. The Developer may also make such further modifications as are permitted by the disclosure statement and the contract of purchase and sale between the purchaser and developer. E.&O.E







**CANVAS**

# PLAN N1

## 1 BEDROOM

LIVING: 920 SQ FT (APPROX)

OUTDOOR: 780 SQ FT (APPROX)

UNITS: 613



## BUILDING 2



Dimensions, square footage, floor plates and floor plans are approximate only. The developer reserves the right without notice to make modifications to dimensions, square footage, floor plans, floor plates, landscaping design, project design, materials and specifications to maintain the high standard of this development. The Developer may also make such further modifications as are permitted by the disclosure statement and the contract of purchase and sale between the purchaser and developer. E.&O.E

**onni**  
group



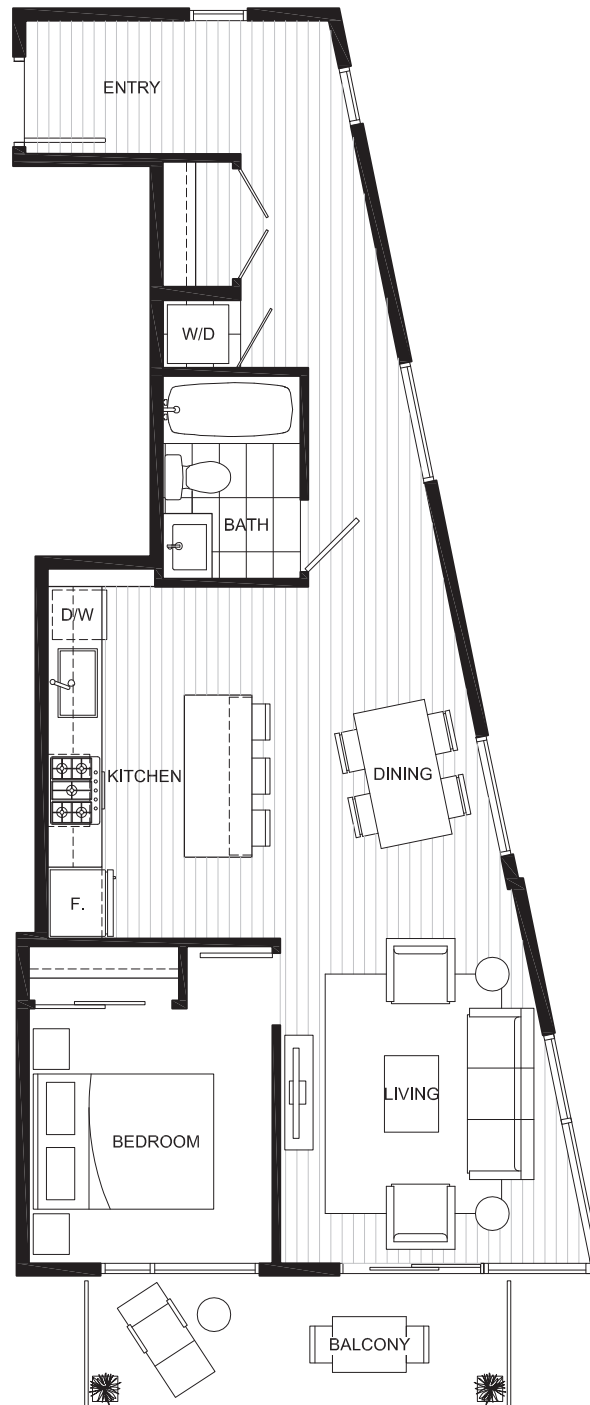
**CANVAS**

# PLAN N2

**1 BEDROOM**

710 SQ FT (APPROX)

UNITS: 313



**BUILDING 2**



Dimensions, square footage, floor plans and floor plates are approximate only. The developer reserves the right without notice to make modifications to dimensions, square footage, floor plans, floor plates, landscaping design, project design, materials and specifications to maintain the high standard of this development. The Developer may also make such further modifications as are permitted by the disclosure statement and the contract of purchase and sale between the purchaser and developer. E.&O.E



# PLAN O

## 1 BEDROOM

670 SQ FT (APPROX)

UNITS: 301-501



# CANVAS



## BUILDING 2



Dimensions, square footage, floor plans and floor plates are approximate only. The developer reserves the right without notice to make modifications to dimensions, square footage, floor plans, floor plates, landscaping design, project design, materials and specifications to maintain the high standard of this development. The Developer may also make such further modifications as are permitted by the disclosure statement and the contract of purchase and sale between the purchaser and developer. E.&O.E





**CANVAS**

# PLAN O1

## 1 BEDROOM

LIVING: 770 SQ FT (APPROX)

OUTDOOR: 735 SQ FT (APPROX)

UNITS: 601



## BUILDING 2



Dimensions, square footage, floor plates and floor plans are approximate only. The developer reserves the right without notice to make modifications to dimensions, square footage, floor plans, floor plates, landscaping design, project design, materials and specifications to maintain the high standard of this development. The Developer may also make such further modifications as are permitted by the disclosure statement and the contract of purchase and sale between the purchaser and developer. E.&O.E





**CANVAS**

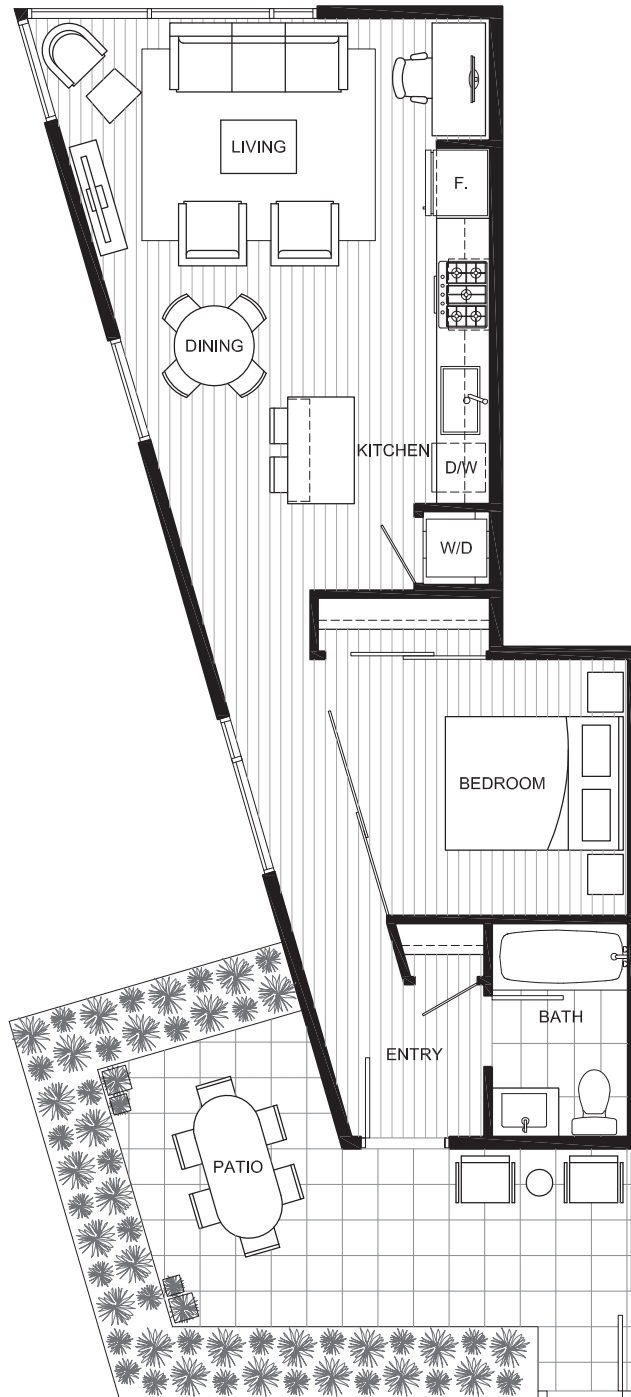
# PLAN P2

## OPEN CONCEPT 1 BEDROOM

LIVING: 620 SQ FT (APPROX)

OUTDOOR: 155 SQ FT (APPROX)

UNITS: 403



### BUILDING 2



Dimensions, square footage, floor plates and floor plans are approximate only. The developer reserves the right without notice to make modifications to dimensions, square footage, floor plans, floor plates, landscaping design, project design, materials and specifications to maintain the high standard of this development. The Developer may also make such further modifications as are permitted by the disclosure statement and the contract of purchase and sale between the purchaser and developer. E.&O.E





**CANVAS**

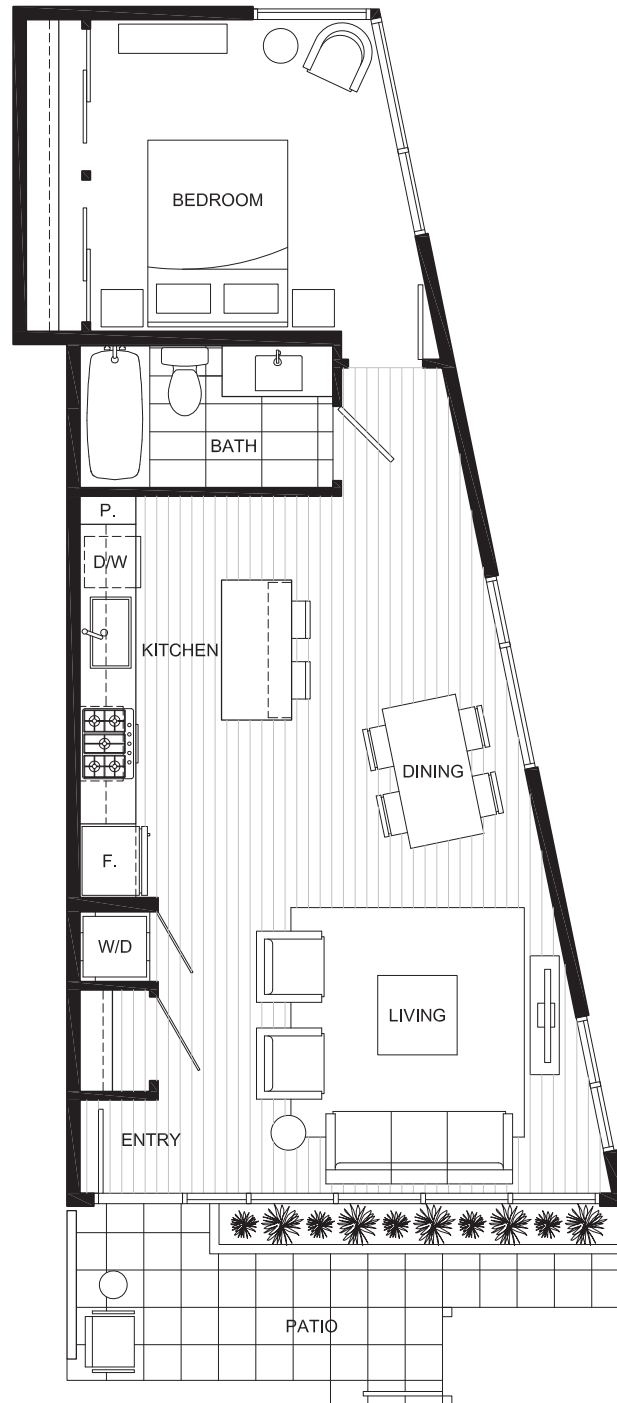
# PLAN S

## 1 BEDROOM

LIVING: 695 SQ FT (APPROX)

OUTDOOR: 110 SQ FT (APPROX)

UNITS: 427



## BUILDING 2



Dimensions, square footage, floor plans and floor plates are approximate only. The developer reserves the right without notice to make modifications to dimensions, square footage, floor plans, floor plates, landscaping design, project design, materials and specifications to maintain the high standard of this development. The Developer may also make such further modifications as are permitted by the disclosure statement and the contract of purchase and sale between the purchaser and developer. E.&O.E





**CANVAS**

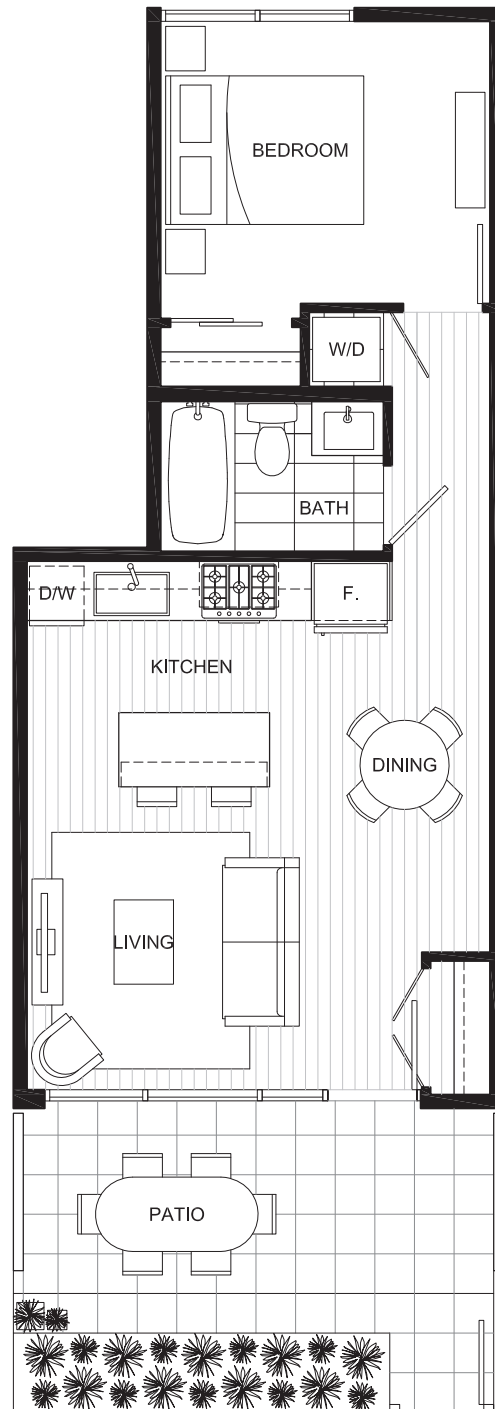
# PLAN U

## 1 BEDROOM

LIVING: 525 SQ FT (APPROX)

OUTDOOR: 105 SQ FT (APPROX)

UNITS: 405



## BUILDING 2



Dimensions, square footage, floor plates and floor plans are approximate only. The developer reserves the right without notice to make modifications to dimensions, square footage, floor plans, floor plates, landscaping design, project design, materials and specifications to maintain the high standard of this development. The Developer may also make such further modifications as are permitted by the disclosure statement and the contract of purchase and sale between the purchaser and developer. E.&O.E

**onni**  
group



**CANVAS**

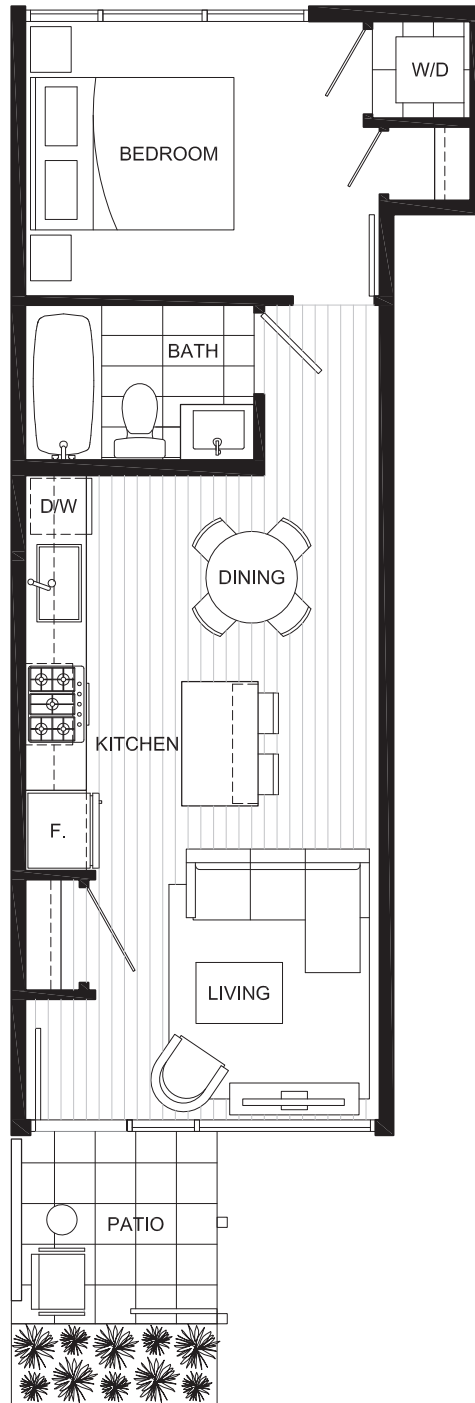
# PLAN V

## 1 BEDROOM

LIVING: 470 SQ FT (APPROX)

OUTDOOR: 80 SQ FT (APPROX)

UNITS: 425



## BUILDING 2



Dimensions, square footage, floor plates and floor plans are approximate only. The developer reserves the right without notice to make modifications to dimensions, square footage, floor plans, floor plates, landscaping design, project design, materials and specifications to maintain the high standard of this development. The Developer may also make such further modifications as are permitted by the disclosure statement and the contract of purchase and sale between the purchaser and developer. E.&O.E

