



Fifth Floor

Unit #503

2 Bed, 1 Bath
Interior: 750 sq.ft.
Exterior: 39 sq.ft.
Total: 789 sq.ft.

Unit #505

1 Bed, 1 Bath
Interior: 516 sq.ft.
Exterior: 39 sq.ft.
Total: 555 sq.ft.

Unit #506

2 Bed, 2 Bath
Interior: 753 sq.ft.
Exterior: 39 sq.ft.
Total: 792 sq.ft.

Unit #507

1 Bed, 1 Bath
Interior: 516 sq.ft.
Exterior: 39 sq.ft.
Total: 555 sq.ft.

Unit #508

2 Bed, 2 Bath
Interior: 753 sq.ft.
Exterior: 39 sq.ft.
Total: 792 sq.ft.

Unit #509

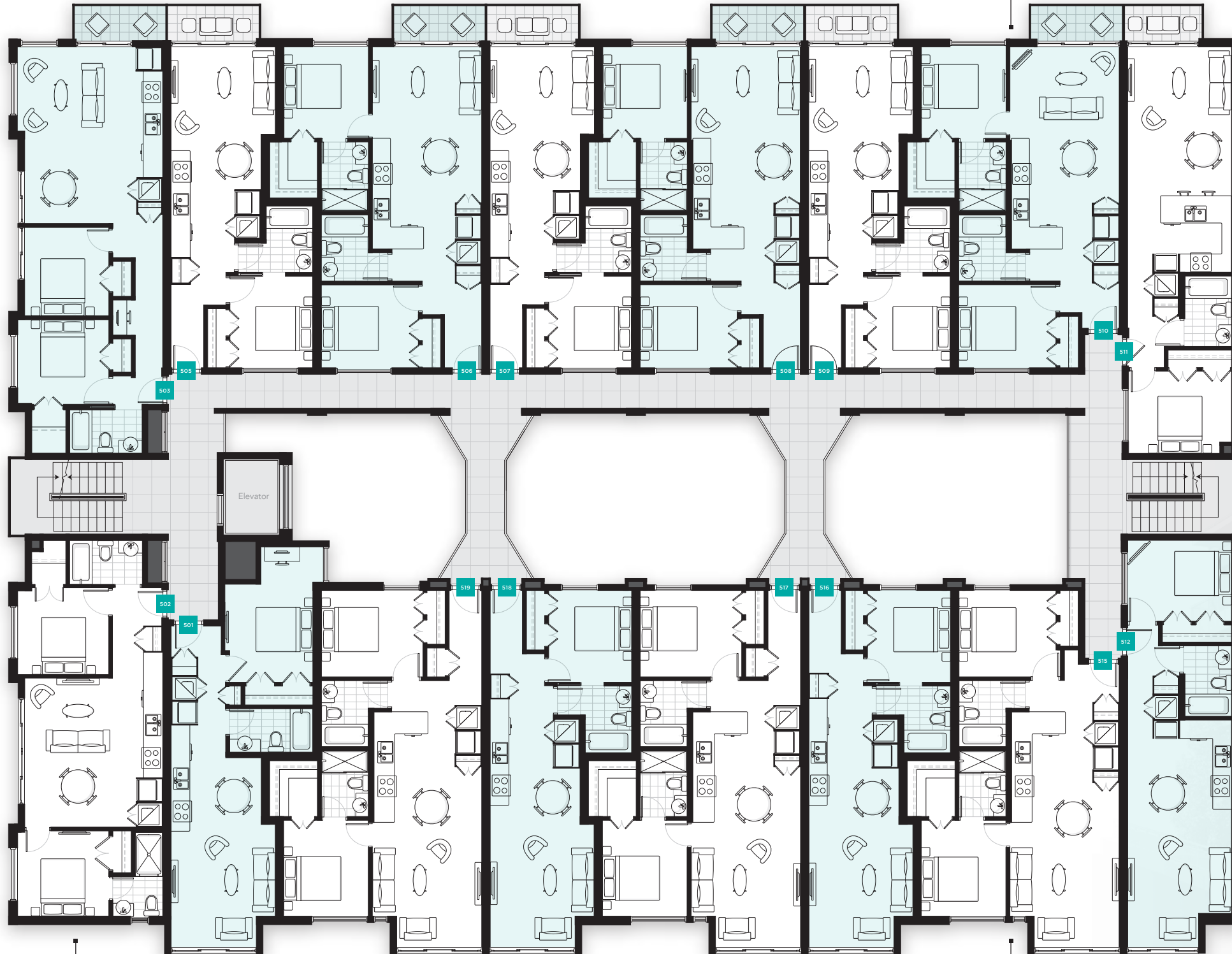
1 Bed, 1 Bath
Interior: 516 sq.ft.
Exterior: 39 sq.ft.
Total: 555 sq.ft.

Unit #510

2 Bed, 2 Bath
Interior: 734 sq.ft.
Exterior: 39 sq.ft.
Total: 773 sq.ft.

Unit #511

1 Bed, 1 Bath
Interior: 564 sq.ft.
Exterior: 32 sq.ft.
Total: 596 sq.ft.



388 Kootenay Street

Unit #502

2 Bed, 2 Bath
Interior: 695 sq.ft.
Total: 695 sq.ft.

Unit #501

1 Bed, 1 Bath
Interior: 568 sq.ft.
Total: 568 sq.ft.

Unit #519

2 Bed, 2 Bath
Interior: 802 sq.ft.
Total: 802 sq.ft.

Unit #518

1 Bed, 1 Bath
Interior: 556 sq.ft.
Total: 556 sq.ft.

Unit #517

2 Bed, 2 Bath
Interior: 802 sq.ft.
Total: 802 sq.ft.

Unit #516

1 Bed, 1 Bath
Interior: 556 sq.ft.
Total: 556 sq.ft.

Unit #515

2 Bed, 2 Bath
Interior: 767 sq.ft.
Total: 767 sq.ft.

Unit #512

1 Bed, 1 Bath
Interior: 554 sq.ft.
Total: 554 sq.ft.

Hastings Street

As you go higher, the view expands further! Enjoy a pictureque view of Vancouver from each unit while taking advantage of this prime location in the heart of East Vancouver. Just imagine sitting on the balcony as the day goes by without a care in the world.

Call 604-330-8838 today to reserve your unit!

North

