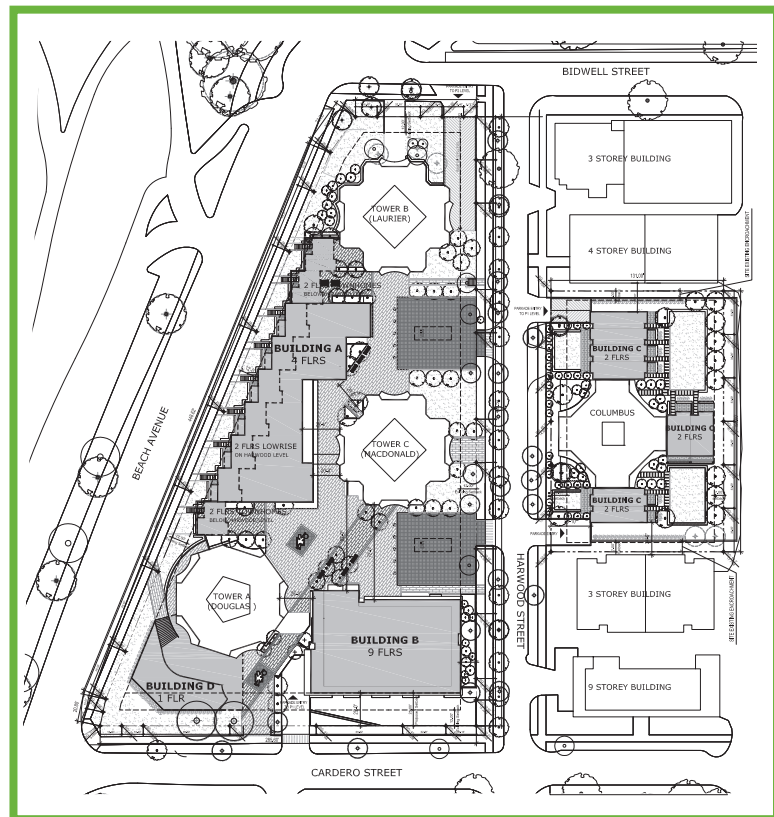


Site Plan

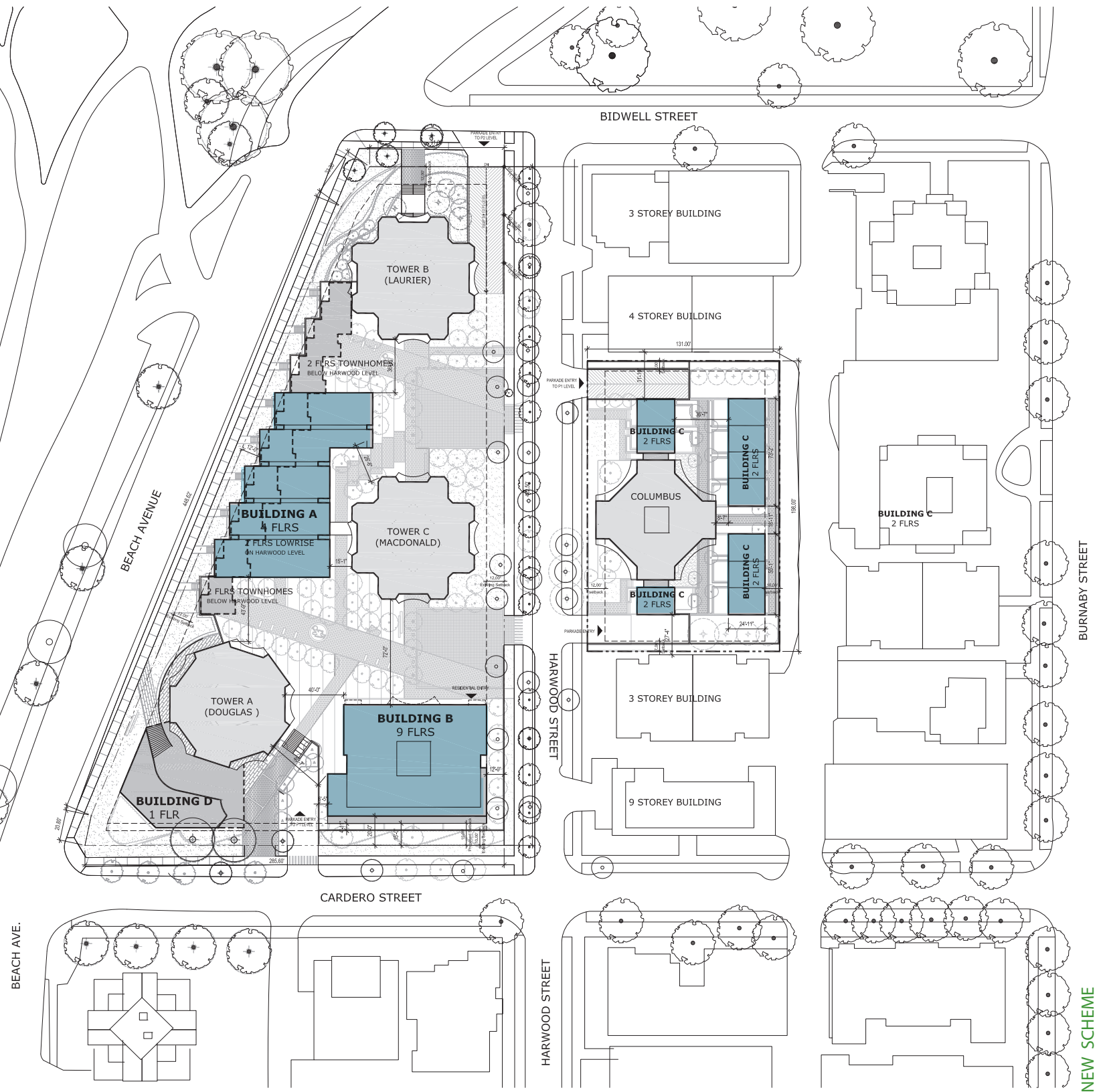
- The new scheme decreases the length of building elements and increases separation between new and old elements on site.

	UDP Meeting Sept. 21st 2011	Revised Scheme November 07th 2011	Change
LOWRISE			
Length on Podium	151'	126'	REDUCED BY 18'
Seperation from Towers A & B	59'	84'	INCREASED BY 25'
MIDRISE			
Length along Cardero St.	114'	104'	REDUCED BY 33'
Seperation from Tower A	25'	40'	INCREASED BY 15'
TH			
Frontage along Harwood st.	160'	147'	REDUCED BY 13'
Depth	44'	29'	REDUCED BY 15'
Seperation From Neighbours	46'	59'	INCREASED BY 13'



SITE PLAN - SEPTEMBER 21st SCHEME

ENGLISH BAY



NEW SCHEME



IBI/HB Architects
700 -1285 West Pender Street
Vancouver BC V6E 4B1 Canada
tel 604 683 8797
fax 604 683 0492

Beach Towers Rezoning Application - Rezoning Application
1600 Beach Avenue & 1651 Harwood Street, Vancouver BC
May 17th 2012