

TRILLION





Artist rendering only.



## A CLASSIC NEIGHBOURHOOD

Welcome to Trillion by Konic, a luxurious collection of twelve family oriented duplex residences located in west Richmond. Trillion homes contain five spacious bedrooms with two ensuite, a comfortable duplex residence with no shared walls except for garage walls. The homes each have two side by side parking spaces along with a generous size private courtyard. Its prime location has easy access to the city centre with the best shopping destinations and is close to three major public schools; Jessie Wowk Elementary, James McKinney Elementary, and Steveston London Secondary School. Trillion is a nice residential area for growing families.



Steveston-London Secondary



James McKinney Elementary



# A VIBRANT CITY

Urban and utterly livable, Richmond is one of the most sought after cities on the West Coast. Home to some of the best shopping and dining in the Lower Mainland, Richmond is a multicultural metropolis known for its sophisticated lifestyle. Further more it offers over 1400 acres of parkland and over forty kilometers of waterfront and interior trails.



## RECREATION

- 1. STEVESTON COMMUNITY CENTRE
- 2. STEVESTON RICHMOND PUBLIC LIBRARY
- 3. JAPANESE CANADIAN CULTURAL CENTRE
- 4. STEVESTON KENDO CLUB
- 5. WEST RICHMOND COMMUNITY CENTRE
- 6. WEST RICHMOND PITCH & PUTT GOLF COURSE
- 7. GULF OF GEORGIA CANNERY
- 8. STEVESTON MUSEUM
- 9. STEVESTON TRAM
- 10. BRITANNIA SHIPYARDS

## EDUCATION

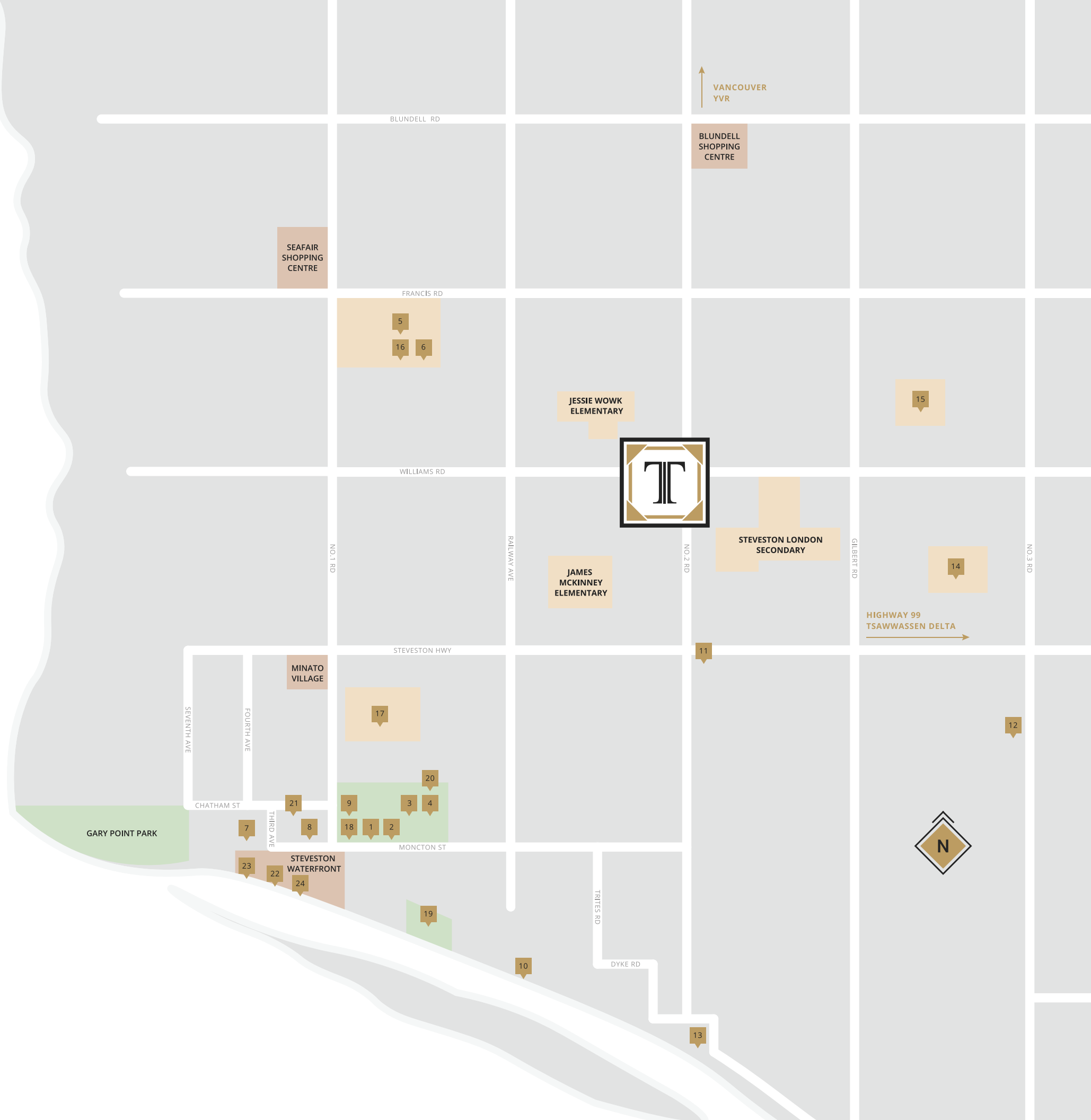
- 11. SOUTH CENTRAL MONTESSORI
- 12. NOAH'S ARK MONTESSORI
- 13. PACIFIC RIM MONTESSORI
- 14. MAPLE LANE ELEMENTARY
- 15. JOHN T. ERRINGTON ELEMENTARY
- 16. HUGE BOYD SECONDARY
- 17. R.A. MCMATH SECONDARY

## PARKS

- 18. STEVESTON COMMUNITY PARK
- 19. IMPERIAL LANDING PARK
- 20. STEVESTON DOG OFF LEASH AREA

## DINING

- 21. ICHIRO JAPANESE RESTAURANT
- 22. SOCKEYE CITY GRILL
- 23. PAJO'S FISH AND CHIPS
- 24. BLUE CANOE WATERFRONT RESTAURANT





Artist rendering only.



## VERSATILITY MEETS FUNCTIONALITY

Trillion's quartz kitchen accentuates stylish detailing with easy access to contemporary soft-close cabinetry for storage. It is outfitted with a premium stainless steel appliance package which includes a gas cooktop as well as durable first-class quartz countertop for both the kitchen and bathrooms.

The homes at Trillion feature over-height ceilings with Euro-style flooring throughout most of the main living area. In contrast, luxurious carpeting is set throughout the second floor and stairs. Graciously designed to suit every lifestyle, Trillion is the definition of versatile functionality.

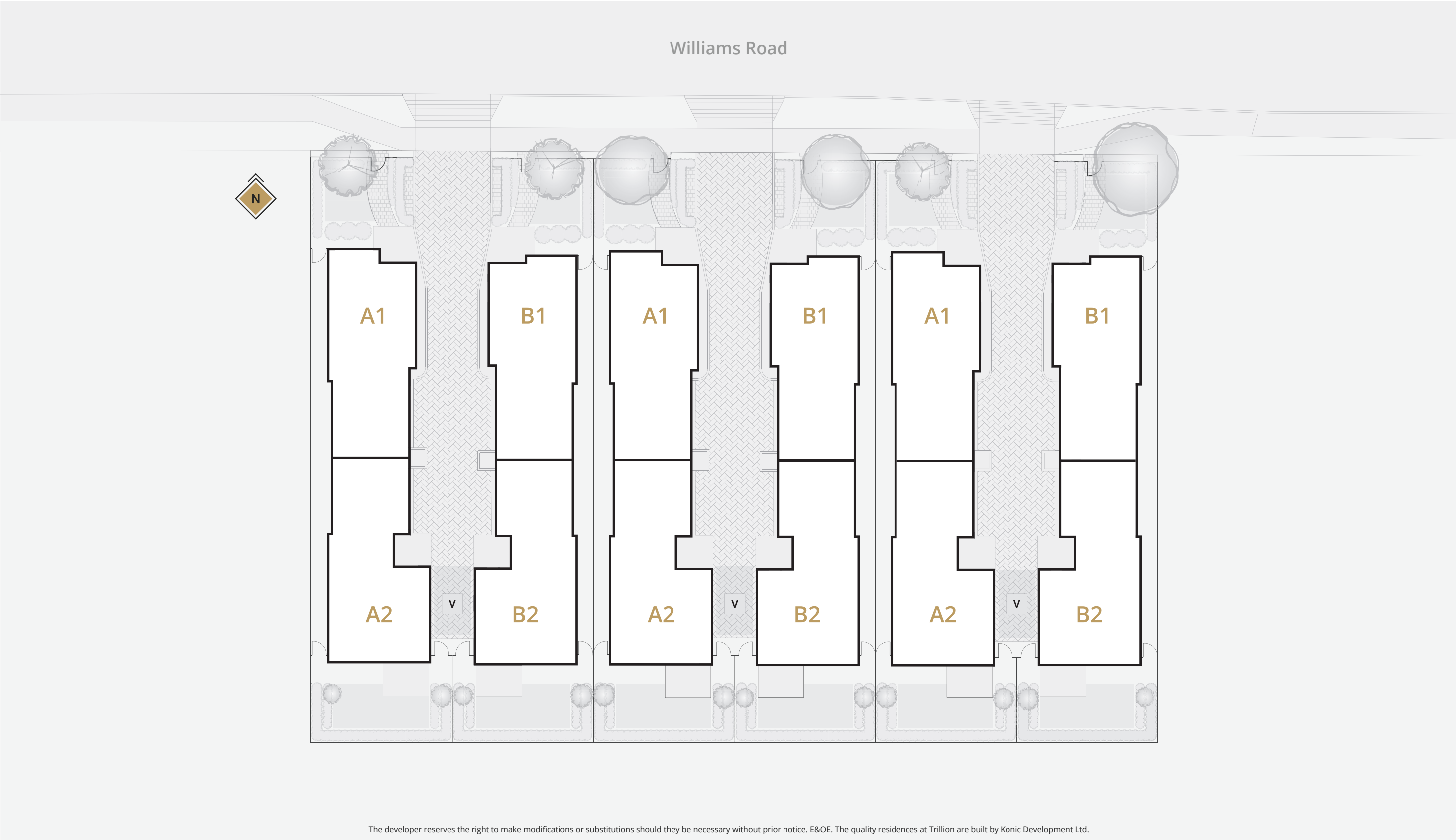




## MODERN INTERIORS

Modern and elegant, the bathrooms feature floating laminate cabinets to luxurious porcelain floor and wall tiles accompanied with a rainshower wand experience. Organize your favourite outfits in Trillion's spacious designer custom walk-in closet system that can be found in every master bedroom. With hot summers and cool winters, all bedroom windows are double glazed to insulate optimal indoor temperatures.

SITE PLAN





# FEATURES - DRAFT

## Trillion 5 Bedroom Duplex-Style Residences

- Side-by-side remote garage with direct home access
- Generously-sized private fenced yard, balcony and patio
- Spacious bedrooms, large kitchen, a powder or bathroom on the main floor

## Interiors

- Over-height nine-foot ceilings on main and second floor
- Euro-style laminate flooring throughout main floor
- Premium carpet flooring throughout the second floor and stairs
- Modern two-inches window blinds on all exterior windows
- LG ultra-large capacity front-loading washer and dryer
- French-inspired crown and panel mouldings in living room and master bedroom

## Bedrooms and Bathrooms

- Designer custom walk-in closet system for master bedroom
- Wire-closet system in remaining bedrooms
- Durable quartz countertop with undermount sinks and faucets
- Stunning custom floating cabinets
- Luxurious porcelain floor and wall tiles
- Polished rainshower head with integral shower wand

## Kitchen

- Spacious kitchen layouts with islands
- Modern panel cabinets with undermount cabinet lighting
- Corner with Lazy Susan cupboard and soft-close hardware
- Green bins and kitchenware organizer
- Contemporary kitchen package:
  - Fisher & Paykel stainless steel gas cooktop
  - Fisher & Paykel built-in self-cleaning electric wall oven
  - Fisher & Paykel French door refrigerator
  - Fisher & Paykel stainless steel dishwasher with double independent drawers
  - High capacity stainless steel slide-out hood fan
- Premium quartz countertops creating a polished work surface
- Easy-to-clean full height backsplash tiles
- Stainless steel undermount double sinks with the featured faucet

## Security and Utility

- Energy-efficiency heat Pump for heating and cooling
- High-efficiency electric hot water tank
- Individual meter for natural gas and electricity consumption
- Rain screen exterior wall system
- Solar Hot Water Ready for future optional system installation
- Exterior gas barbeque outlet rough-in
- Central vacuum system rough-in
- Easily accessible hose bib
- Electric vehicle car charging port
- Premium Konic home care services for 2 years
- 2-5-10 warranty with Pacific Home Warranty

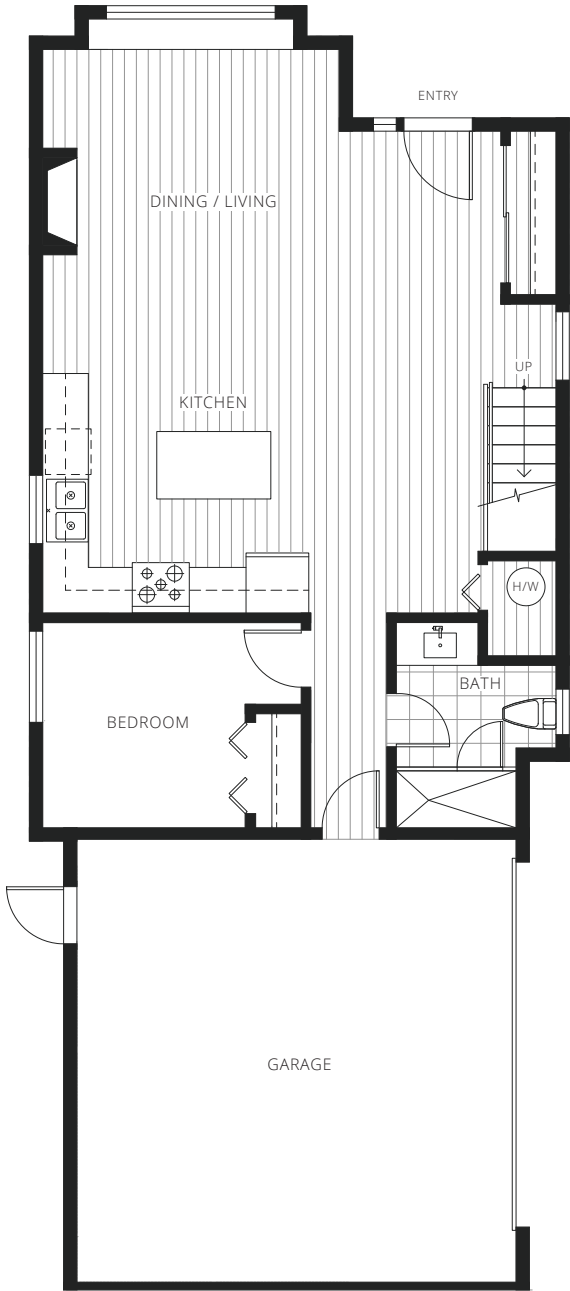
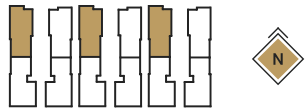
## Optional Upgrades

- Miele appliances package
- Smart home package
- Senior home option

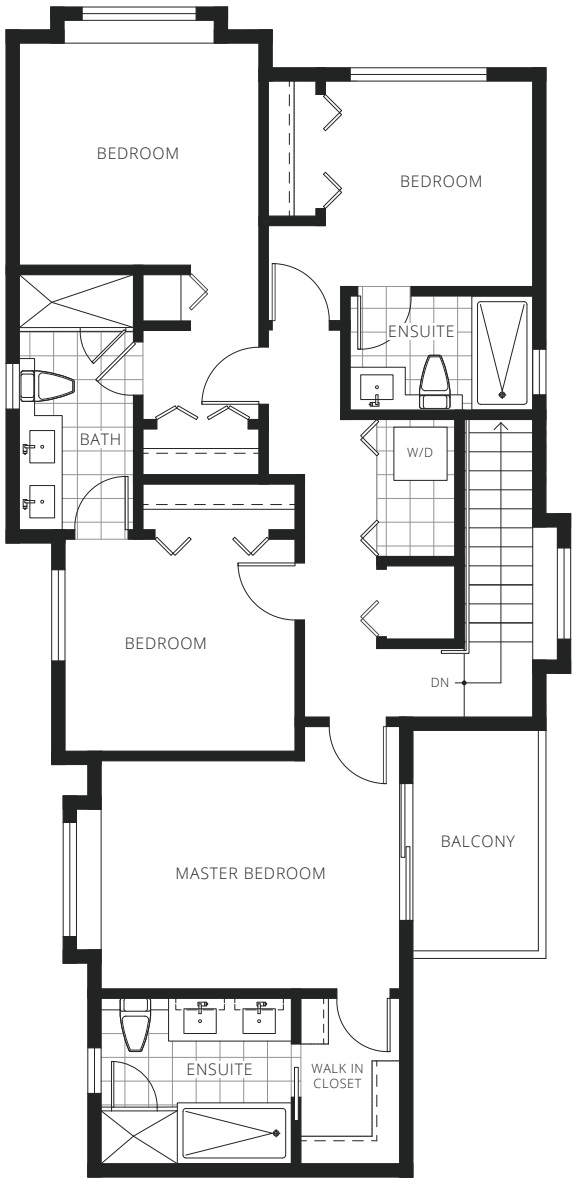
FLOOR PLAN - DRAFT

A1

5 BEDROOM, 4 BATHROOM  
1,770 SQ FT (APPROX.) LIVING AREA



MAIN FLOOR



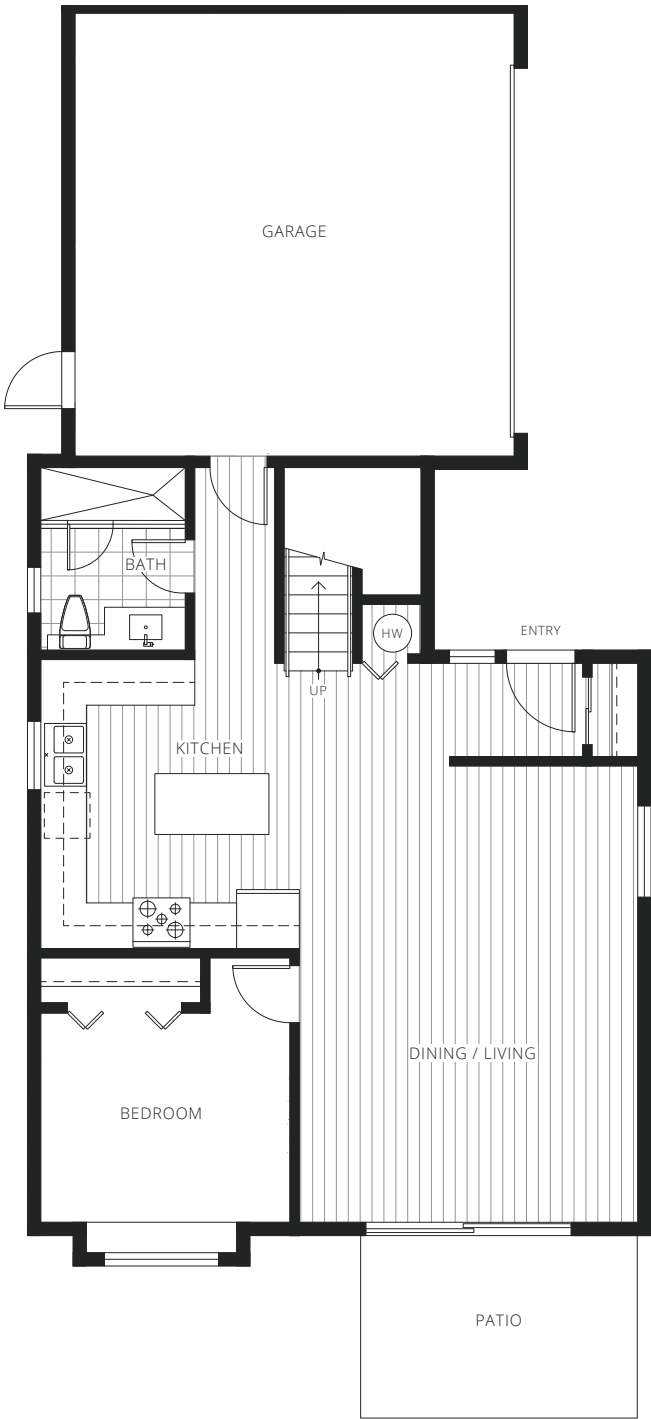
UPPER FLOOR



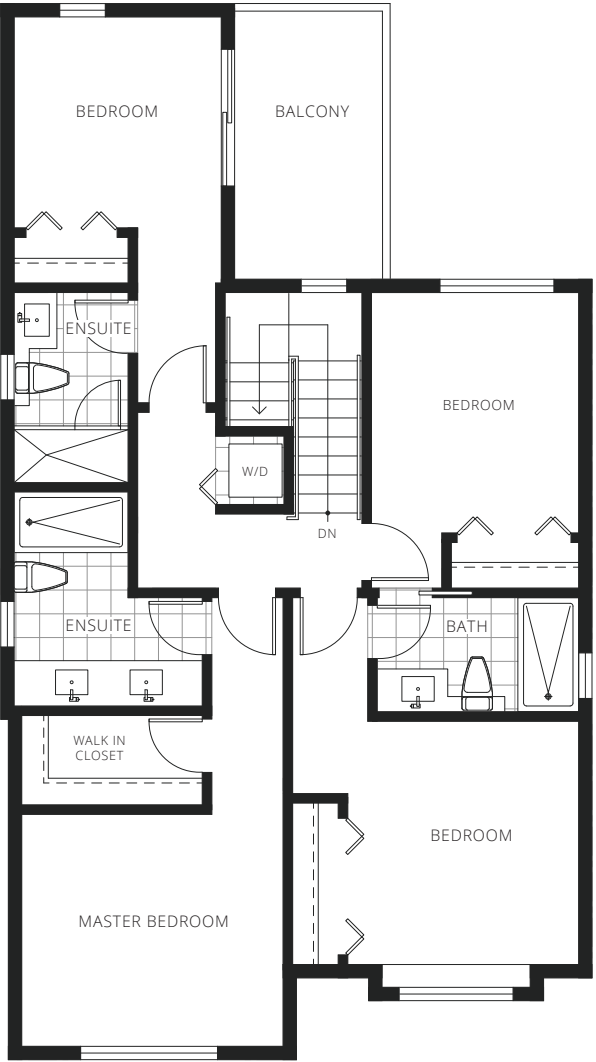
FLOOR PLAN - DRAFT

A2

5 BEDROOM, 4 BATHROOM  
1,820 SQ FT (APPROX.) LIVING AREA



MAIN FLOOR



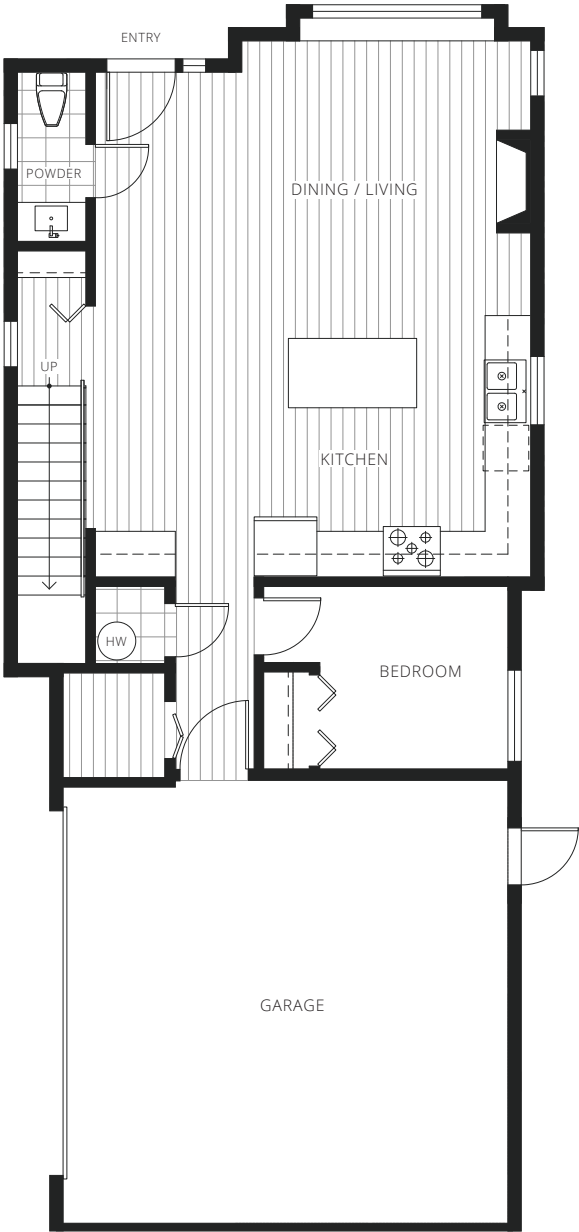
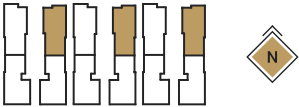
UPPER FLOOR

The developer reserves the right to make modifications or substitutions should they be necessary without prior notice, any measurements provided are approximate only. E&OE. The quality residences at Trillion are built by Konic Development Ltd.

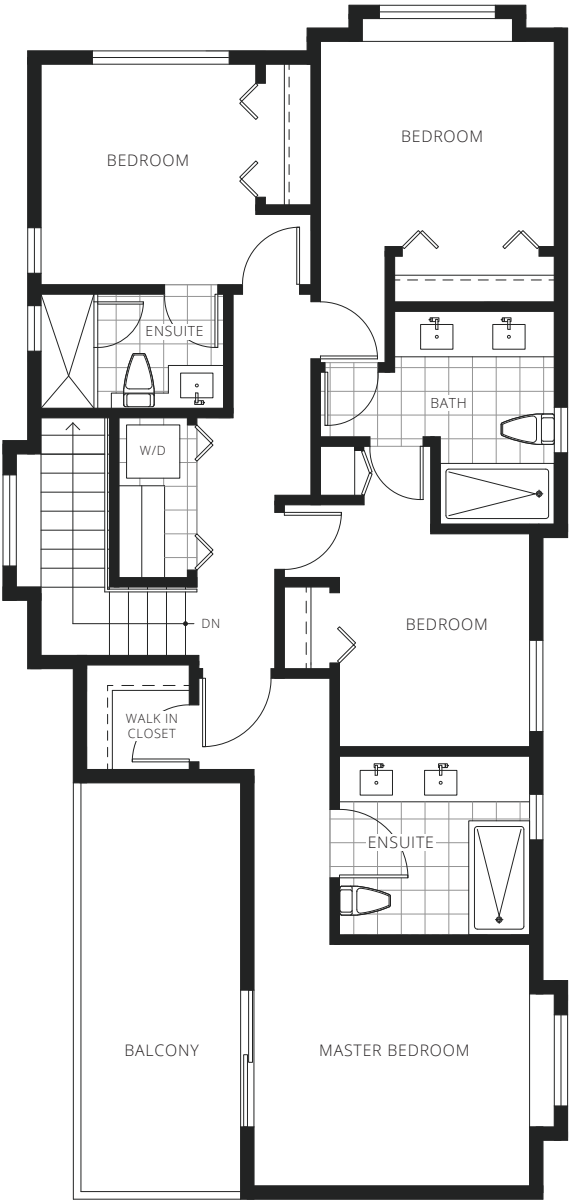
FLOOR PLAN - DRAFT

B1

5 BEDROOM, 3.5 BATHROOM  
1,755 SQ FT (APPROX.) LIVING AREA



MAIN FLOOR



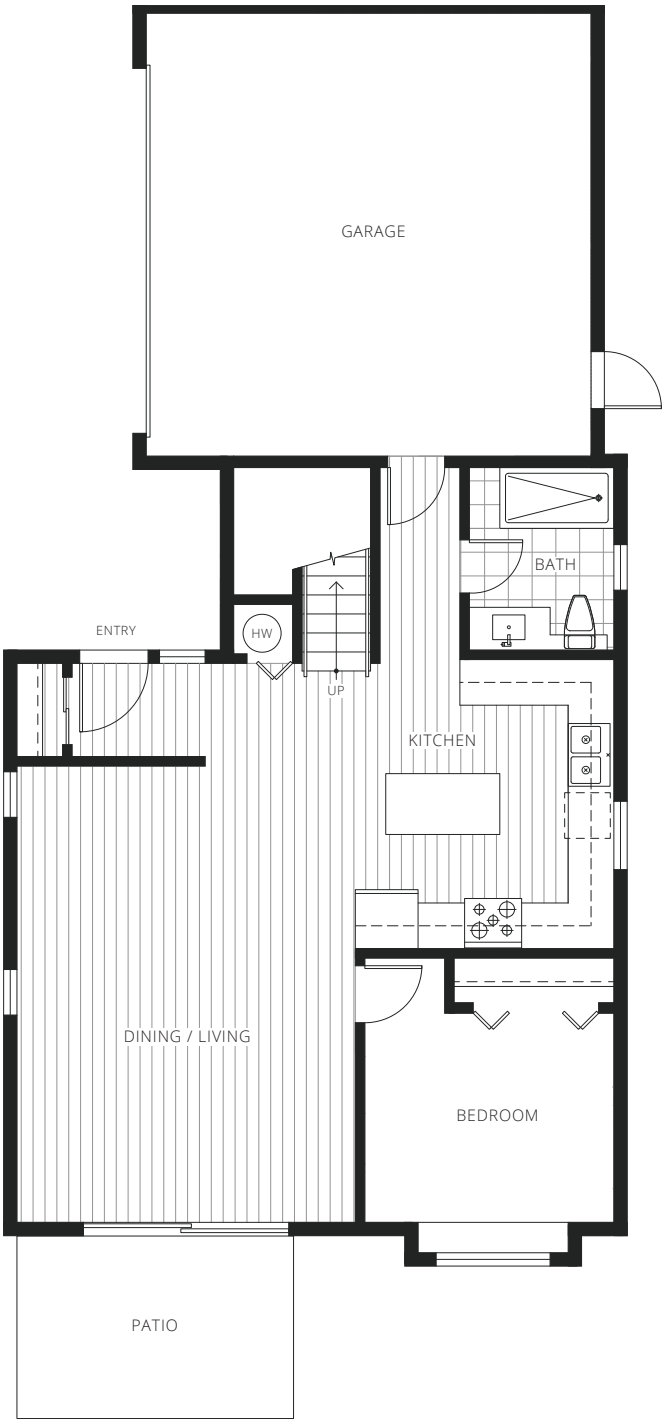
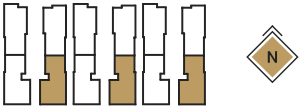
UPPER FLOOR



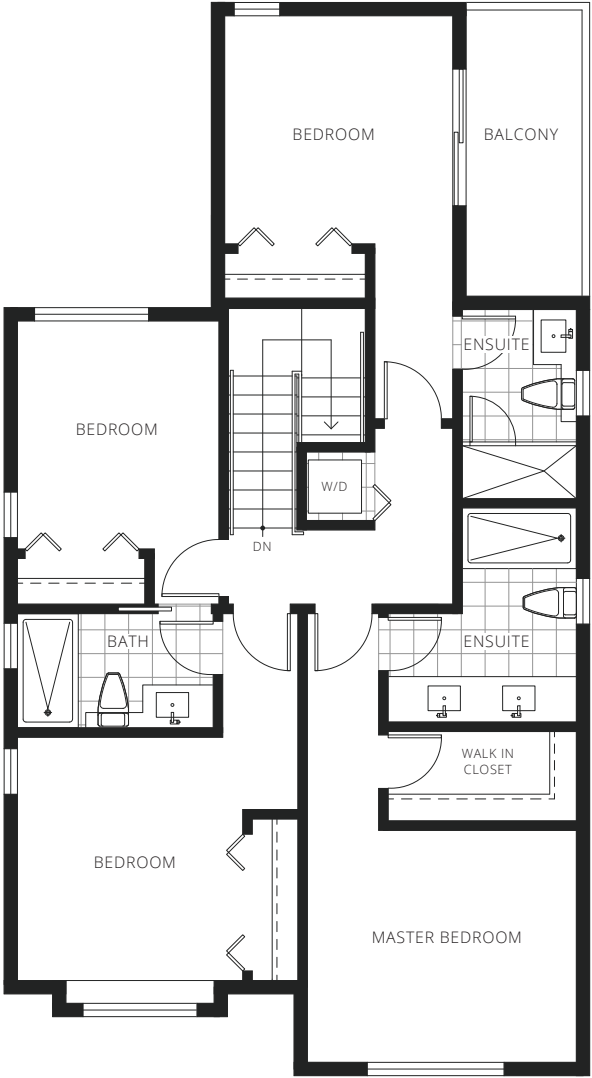
FLOOR PLAN - DRAFT

B2

5 BEDROOM, 4 BATHROOM  
1,835 SQ FT (APPROX.) LIVING AREA



MAIN FLOOR



UPPER FLOOR

## BUILT WITH PASSION

The duplex homes of Trillion are built with the utmost care by Konic Development. From humble beginnings in Richmond, Konic has built its foundation on the satisfaction of home buyers. Each home is constructed with passion and commitment. Konic takes pride in creating remarkable brands based on a strict system of project selection. With over a decade of experience, the Konic family aims to create a warm, everlasting community with homes boosting exceptional craftsmanship and customers receiving the most impeccable service.

**KONIC**  
— HOMES —

konic.ca 604.242.1193

@konichomes



konic.ca/trillion